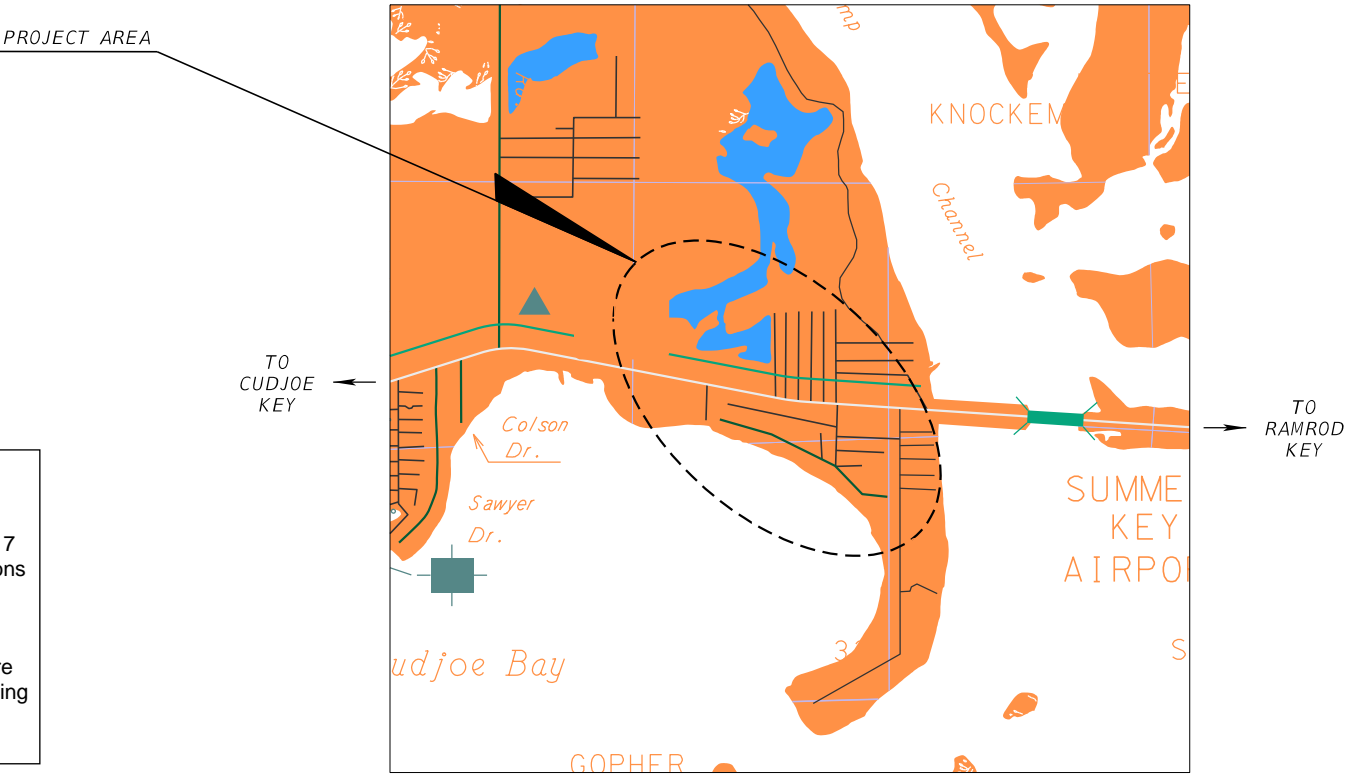
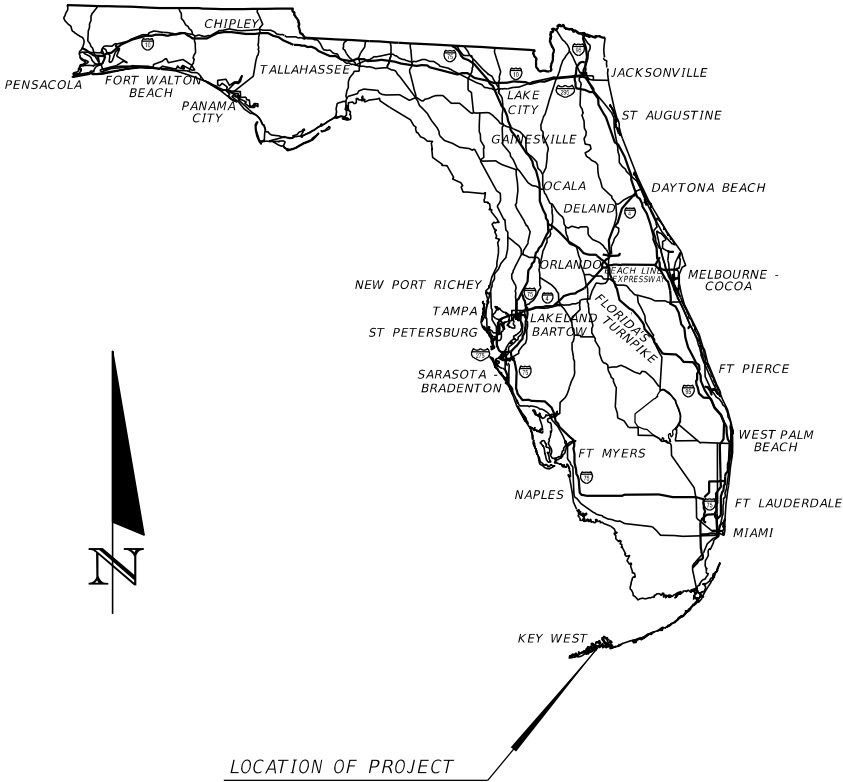


CONTRACT PLANS

MONROE COUNTY ROADWAY
VULNERABILITY ANALYSIS
AND CAPITAL PLAN

INDEX OF ROADWAY PLANS

SHEET NO.	SHEET DESCRIPTION
1	KEY SHEET
2	PROJECT LAYOUT
3 - 3A	TYPICAL SECTION
4 - 15	ROADWAY PLAN



Disclaimer:
These are conceptual roadway plans developed under the Monroe County Roadway Vulnerability Analysis project for planning purposes. The analysis considered the NOAA 2017 (Intermediate-High) Sea Level Rise and King Tide Projections for a target year of 2045. A pump station parcel will be required and identified in the design phase. The recommended roadway elevation projects depicted and perceived drainage structure locations and layout shown are subject to change throughout the execution of the engineering design phase. These conceptual roadway plans cannot be relied upon for any other purpose by any third party.

PLANS PREPARED BY:
HDR ENGINEERING, INC.
8333 NW 53RD STREET, SUITE 302
DORAL, FL 33166

NOTE: THE SCALE OF THESE PLANS MAY
HAVE CHANGED DUE TO REPRODUCTION.

PRELIMINARY PLANS
FOR REFERENCE PURPOSES ONLY
JULY 2021



Conceptual Plans not to be used for construction.

PROJECT LENGTH IS BASED ON Q OF CONSTRUCTION

LENGTH OF PROJECT

	LINEAR FEET	MILES
ROADWAY	9,117	1.727
BRIDGES	--	--
NET LENGTH OF PROJECT	9,117	1.727
EXCEPTIONS	--	--
GROSS LENGTH OF PROJECT	9,117	1.727

PROJECT AREA #42
SUMMERLAND KEY
SUBDIVISIONS:
SUMMERLAND KEY COVE AMENDED / SUMMERLAND KEY COVE
1ST & 3RD ADDITIONS / SUMMERLAND ESTATES RESUBDIVISION NO. 2

ROADWAY PLANS
ENGINEER OF RECORD:

P.E. NO:



REVISIONS			
DATE	DESCRIPTION	DATE	DESCRIPTION

Conceptual Plans not to be used for construction.

GREYPALERM

8/3/2021 2:48:37 PM Default



HDR ENGINEERING, INC.
8333 NW 53RD STREET, SUITE 302
DORAL, FL 33166-4786



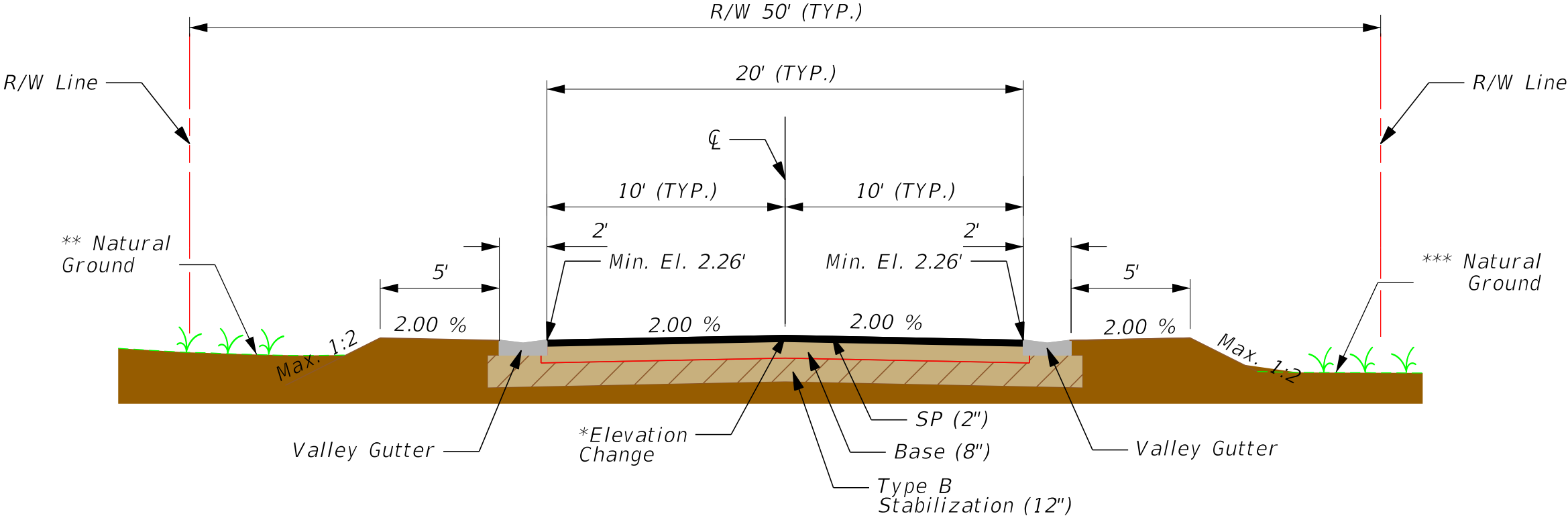
MONROE COUNTY ROADWAY VULNERABILITY
ANALYSIS AND CAPITAL PLAN
SUMMERLAND KEY COVE AMENDED / SUMMERLAND
KEY COVE 1ST & 3RD ADDITIONS / SUMMERLAND
ESTATES RESUBDIVISION NO. 2 PROJECT LAYOUT

SHEET
NO.

2

PW:\

Valley Gutter Alternative
Design for NOAA Intermediate-High
2045 SLR Projections



Typical Section

Airport Dr N
Sta. 100+00 to Sta. 120+12
Park Dr
Sta. 200+00 to Sta. 212+98
Lake Dr N
Sta. 300+00 to Sta. 303+25
Airport Dr S
Sta. 400+34 to Sta. 428+06
45th St (40' R/W)
Sta. 600+13 to Sta. 605+86

(24' Pavement)
Caribbean Dr W
Sta. 500+00 to Sta. 511+19

(18' Pavement)
46th St (40' R/W)
Sta. 700+00 to Sta. 710+18

REVISIONS			
DATE	DESCRIPTION	DATE	DESCRIPTION



HDR ENGINEERING, INC.
8333 NW 53RD STREET, SUITE 302
DORAL, FL 33166-4786



MONROE COUNTY ROADWAY VULNERABILITY
ANALYSIS AND CAPITAL PLAN
SUMMERLAND KEY COVE AMENDED / SUMMERLAND
KEY COVE 1ST & 3RD ADDITIONS / SUMMERLAND
ESTATES RESUBDIVISION NO. 2 TYPICAL SECTION

SHEET
NO.

3

Conceptual Plans not to be used for construction.

Valley Gutter Alternative
Design for NOAA Intermediate-High
2045 SLR Projections

SUMMERLAND KEY - SUMMERLAND KEY COVE AMENDED / SUMMERLAND KEY COVE 1ST & 3RD ADDITIONS / SUMMERLAND ESTATES RESUBDIVISION NO. 2 ELEVATIONS SUMMARY			
ROADWAY SEGMENT	ELEVATION CHANGE * (Between exist. ground and final grade)	LEFT NATURAL GROUND (FT. NAVD88) **	RIGHT NATURAL GROUND (FT. NAVD88) ***
AIRPORT DR N	0.00' - 0.05'	1.83' - 3.97'	1.91' - 3.61'
PARK DR	0.00' - 0.03'	2.49' - 3.76'	2.15' - 3.66'
LAKE DR N	0.00' - 0.04'	2.29' - 3.21'	2.28' - 3.34'
AIRPORT DR S	0.00' - 0.05'	0.90' - 3.12'	1.94' - 3.68'
45TH ST	0.00' - 1.12'	0.80' - 3.44'	0.92' - 3.08'
CARIBBEAN DR W	0.00' - 0.90'	1.91' - 3.81'	2.15' - 4.09'
46TH ST	0.35' - 1.70'	0.75' - 2.81'	0.31' - 2.09'

Conceptual Plans not to be used for construction.



REVISIONS			
DATE	DESCRIPTION	DATE	DESCRIPTION

Conceptual Plans not to be used for construction.



HDR ENGINEERING, INC.
8333 NW 53RD STREET, SUITE 302
DORAL, FL 33166-4786



MONROE COUNTY ROADWAY VULNERABILITY
ANALYSIS AND CAPITAL PLAN
SUMMERLAND KEY COVE AMENDED /
SUMMERLAND KEY COVE 1ST & 3RD ADDITIONS /
SUMMERLAND ESTATES RESUBDIVISION NO. 2

SHEET
NO.
4



REVISIONS			
DATE	DESCRIPTION	DATE	DESCRIPTION

Conceptual Plans not to be used for construction.



HDR ENGINEERING, INC.
8333 NW 53RD STREET, SUITE 302
DORAL, FL 33166-4786



MONROE COUNTY ROADWAY VULNERABILITY
ANALYSIS AND CAPITAL PLAN
SUMMERLAND KEY COVE AMENDED /
SUMMERLAND KEY COVE 1ST & 3RD ADDITIONS /
SUMMERLAND ESTATES RESUBDIVISION NO. 2

SHEET
NO.
5



REVISIONS			
DATE	DESCRIPTION	DATE	DESCRIPTION



HDR ENGINEERING, INC.
8333 NW 53RD STREET, SUITE 302
DORAL, FL 33166-4786



MONROE COUNTY ROADWAY VULNERABILITY
ANALYSIS AND CAPITAL PLAN
SUMMERLAND KEY COVE AMENDED /
SUMMERLAND KEY COVE 1ST & 3RD ADDITIONS /
SUMMERLAND ESTATES RESUBDIVISION NO. 2

SHEET
NO.

6

Conceptual Plans not to be used for construction.



REVISIONS			
DATE	DESCRIPTION	DATE	DESCRIPTION

Conceptual Plans not to be used for construction.



HDR ENGINEERING, INC.
8333 NW 53RD STREET, SUITE 302
DORAL, FL 33166-4786



MONROE COUNTY ROADWAY VULNERABILITY
ANALYSIS AND CAPITAL PLAN
SUMMERLAND KEY COVE AMENDED /
SUMMERLAND KEY COVE 1ST & 5RD ADDITIONS /
SUMMERLAND ESTATES RESUBDIVISION NO. 2

SHEET
NO.

7



MATCH LINE STA. 406+51.07

MATCH LINE STA. 414+00.00



REVISIONS			
DATE	DESCRIPTION	DATE	DESCRIPTION



HDR ENGINEERING, INC.
8333 NW 53RD STREET, SUITE 302
DORAL, FL 33166-4786



MONROE COUNTY ROADWAY VULNERABILITY
ANALYSIS AND CAPITAL PLAN
SUMMERLAND KEY COVE AMENDED /
SUMMERLAND KEY COVE 1ST & 3RD ADDITIONS /
SUMMERLAND ESTATES RESUBDIVISION NO. 2

SHEET
NO.

9

Conceptual Plans not to be used for construction.

MATCH LINE STA. 414+00.00

MATCH LINE STA. 421+49.00



LEGEND

- STORM INLETS
- INJECTION WELLS
- STORM DRAIN
- FORCE MAIN
- PUMP STATION LOCATION
- PAVEMENT RECONSTRUCTION LIMITS
- PAVEMENT RECONSTRUCTION LIMITS WITH ROADWAY ELEVATION CHANGE
- ROADSIDE RECONSTRUCTION LIMITS

REVISIONS			
DATE	DESCRIPTION	DATE	DESCRIPTION

Conceptual Plans not to be used for construction.



HDR ENGINEERING, INC.
8333 NW 53RD STREET, SUITE 302
DORAL, FL 33166-4786



MONROE COUNTY ROADWAY VULNERABILITY
ANALYSIS AND CAPITAL PLAN
SUMMERLAND KEY COVE AMENDED /
SUMMERLAND KEY COVE 1ST & 3RD ADDITIONS /
SUMMERLAND ESTATES RESUBDIVISION NO. 2

SHEET
NO.

10

MATCH LINE STA. 421+49.00



REVISIONS			
DATE	DESCRIPTION	DATE	DESCRIPTION

Conceptual Plans not to be used for construction.




HDR ENGINEERING, INC.
8333 NW 53RD STREET, SUITE 302
DORAL, FL 33166-4786

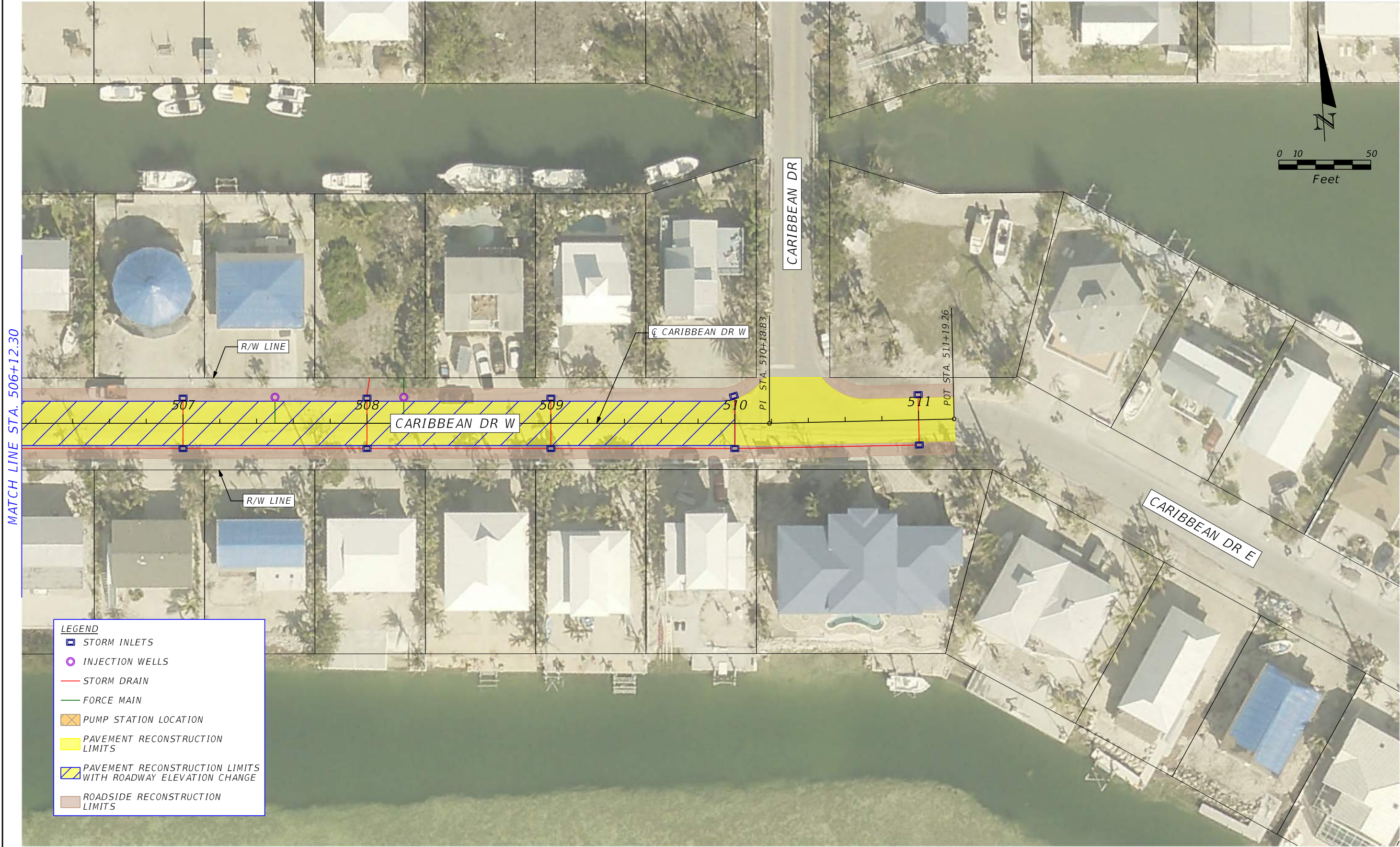


MONROE COUNTY ROADWAY VULNERABILITY
ANALYSIS AND CAPITAL PLAN
SUMMERLAND KEY COVE AMENDED /
SUMMERLAND KEY COVE 1ST & 3RD ADDITIONS /
SUMMERLAND ESTATES RESUBDIVISION NO. 2

SHEET
NO.
11



REVISIONS				<div><div></div><div>HDR</div><div>HDR ENGINEERING, INC. 8333 NW 53RD STREET, SUITE 302 DORAL, FL 33166-4786</div></div>		MONROE COUNTY ROADWAY VULNERABILITY ANALYSIS AND CAPITAL PLAN SUMMERLAND KEY COVE AMENDED / SUMMERLAND KEY COVE 1ST & 5RD ADDITIONS / SUMMERLAND ESTATES RESUBDIVISION NO. 2	SHEET NO. 12
DATE	DESCRIPTION	DATE	DESCRIPTION				
Conceptual Plans not to be used for construction.				8/3/2021 2:51:04 PM Default			PW:\



REVISIONS			
DATE	DESCRIPTION	DATE	DESCRIPTION

Conceptual Plans not to be used for construction.

MHENRIQU

6/8/2022 5:19:13 PM Default



HDR ENGINEERING, INC.
8333 NW 53RD STREET, SUITE 302
DORAL, FL 33166-4786



MONROE COUNTY ROADWAY VULNERABILITY
ANALYSIS AND CAPITAL PLAN
SUMMERLAND KEY COVE AMENDED /
SUMMERLAND KEY COVE 1ST & 5RD ADDITIONS /
SUMMERLAND ESTATES RESUBDIVISION NO. 2

SHEET
NO.

13

PW:\

MATCH LINE STA. 703+40.00



REVISIONS			
DATE	DESCRIPTION	DATE	DESCRIPTION



HDR ENGINEERING, INC.
8333 NW 53RD STREET, SUITE 302
DORAL, FL 33166-4786



MONROE COUNTY ROADWAY VULNERABILITY
ANALYSIS AND CAPITAL PLAN
SUMMERLAND KEY COVE AMENDED /
SUMMERLAND KEY COVE 1ST & 5RD ADDITIONS /
SUMMERLAND ESTATES RESUBDIVISION NO. 2

SHEET
NO.
14

Conceptual Plans not to be used for construction.

GREY/PALERM

8/3/2021 2:51:33 PM Default

PW:\



REVISIONS			
DATE	DESCRIPTION	DATE	DESCRIPTION

Conceptual Plans not to be used for construction.

GREYPALERM

8/3/2021 2:51:47 PM Default



HDR ENGINEERING, INC.
8333 NW 53RD STREET, SUITE 302
DORAL, FL 33166-4786



MONROE COUNTY ROADWAY VULNERABILITY
ANALYSIS AND CAPITAL PLAN
SUMMERLAND KEY COVE AMENDED /
SUMMERLAND KEY COVE 1ST & 3RD ADDITIONS /
SUMMERLAND ESTATES RESUBDIVISION NO. 2

SHEET
NO.

15

PW:\