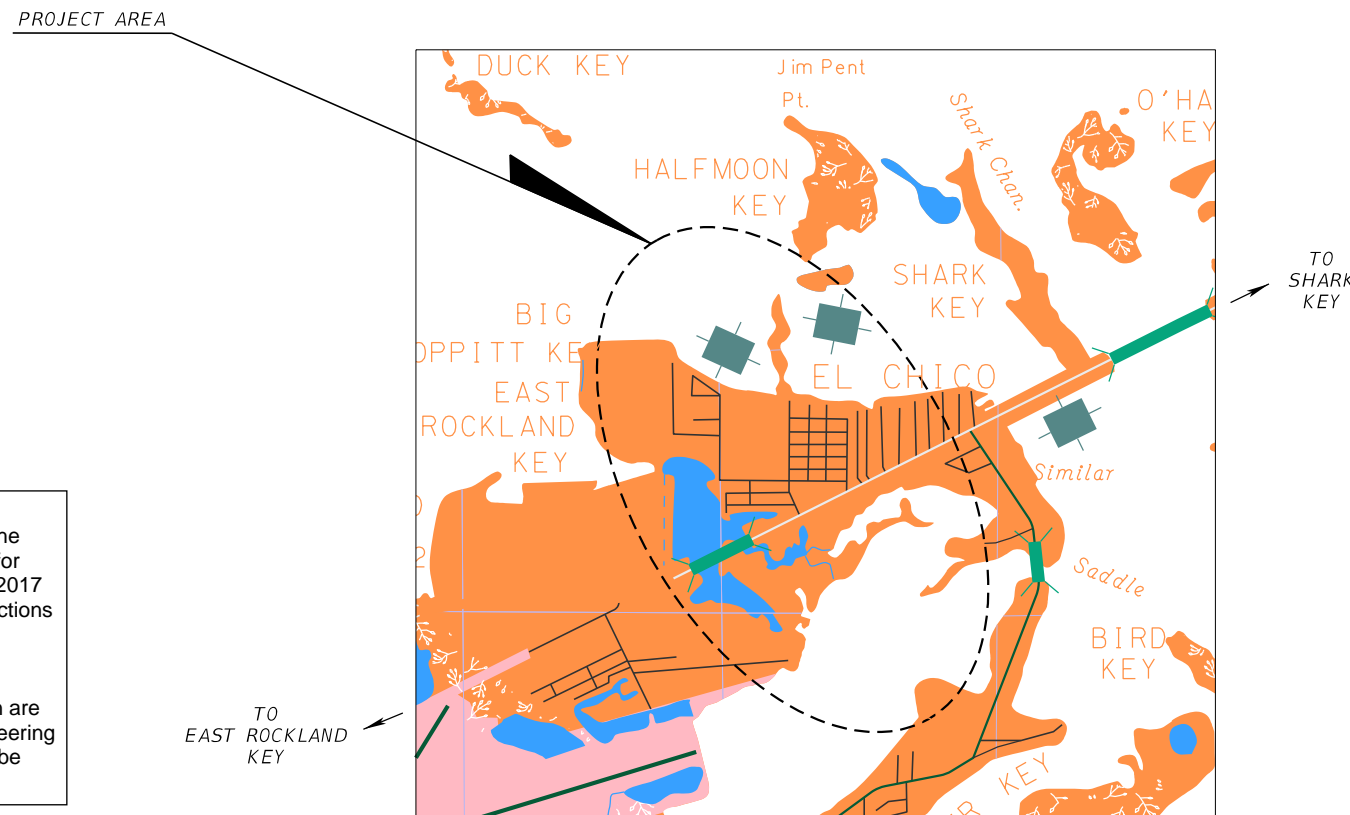
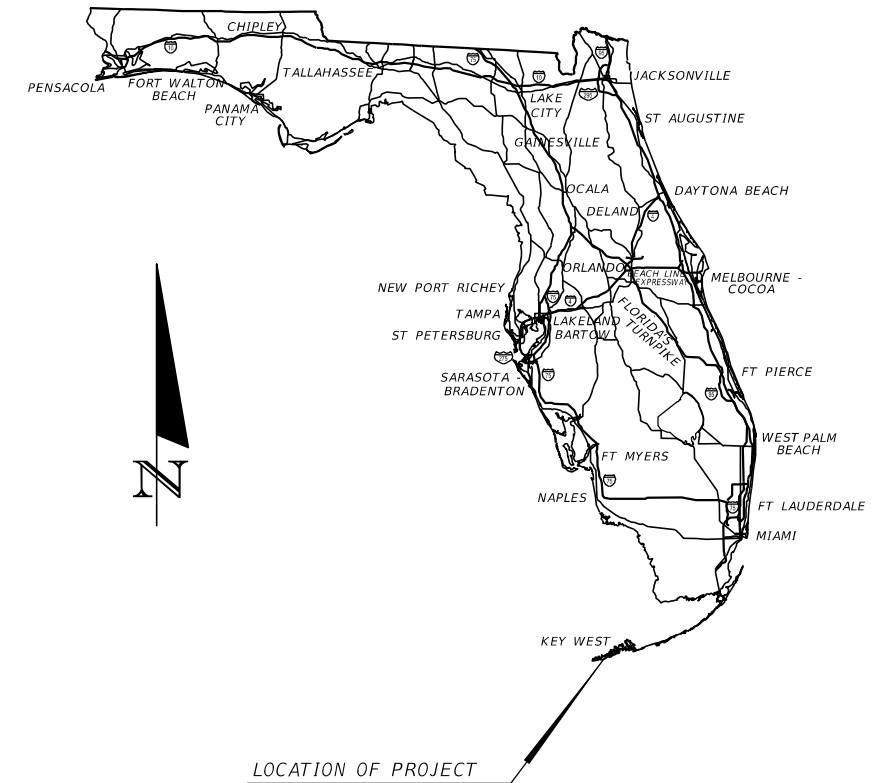


CONTRACT PLANS

MONROE COUNTY ROADWAY VULNERABILITY ANALYSIS AND CAPITAL PLAN

INDEX OF ROADWAY PLANS

SHEET NO.	SHEET DESCRIPTION
1	KEY SHEET
2	PROJECT LAYOUT
3 - 3A	TYPICAL SECTION
4 - 27	ROADWAY PLAN



Disclaimer:
 These are conceptual roadway plans developed under the Monroe County Roadway Vulnerability Analysis project for planning purposes. The analysis considered the NOAA 2017 (Intermediate-High) Sea Level Rise and King Tide Projections for a target year of 2045. A pump station parcel will be required and identified in the design phase. The recommended roadway elevation projects depicted and perceived drainage structure locations and layout shown are subject to change throughout the execution of the engineering design phase. These conceptual roadway plans cannot be relied upon for any other purpose by any third party.

PLANS PREPARED BY:
 HDR ENGINEERING, INC.
 8333 NW 53RD STREET, SUITE 302
 DORAL, FL 33166

NOTE: THE SCALE OF THESE PLANS MAY HAVE CHANGED DUE TO REPRODUCTION.

PRELIMINARY PLANS
 FOR REFERENCE PURPOSES ONLY
 JULY 2021

Conceptual Plans not to be used for construction.



PROJECT LENGTH IS BASED ON $\frac{1}{4}$ OF CONSTRUCTION

LENGTH OF PROJECT

	LINEAR FEET	MILES
ROADWAY	26,081	4.940
BRIDGES	--	--
NET LENGTH OF PROJECT	26,081	4.940
EXCEPTIONS	--	--
GROSS LENGTH OF PROJECT	26,081	4.940

PROJECT AREA #52
 BIG COPPITT KEY
 SUBDIVISIONS:
 GULFREST PARK / GULFREST PARK NO. 2 / COPPITT EXTENSION /
 COPPITT RESUBDIVISION / JOHNSONVILLE / SIMILAR SOUND SECTION A

ROADWAY PLANS
 ENGINEER OF RECORD:

P.E. NO:



REVISIONS			
DATE	DESCRIPTION	DATE	DESCRIPTION



HDR ENGINEERING, INC.
8333 NW 53RD STREET, SUITE 302
DORAL, FL 33166-4786



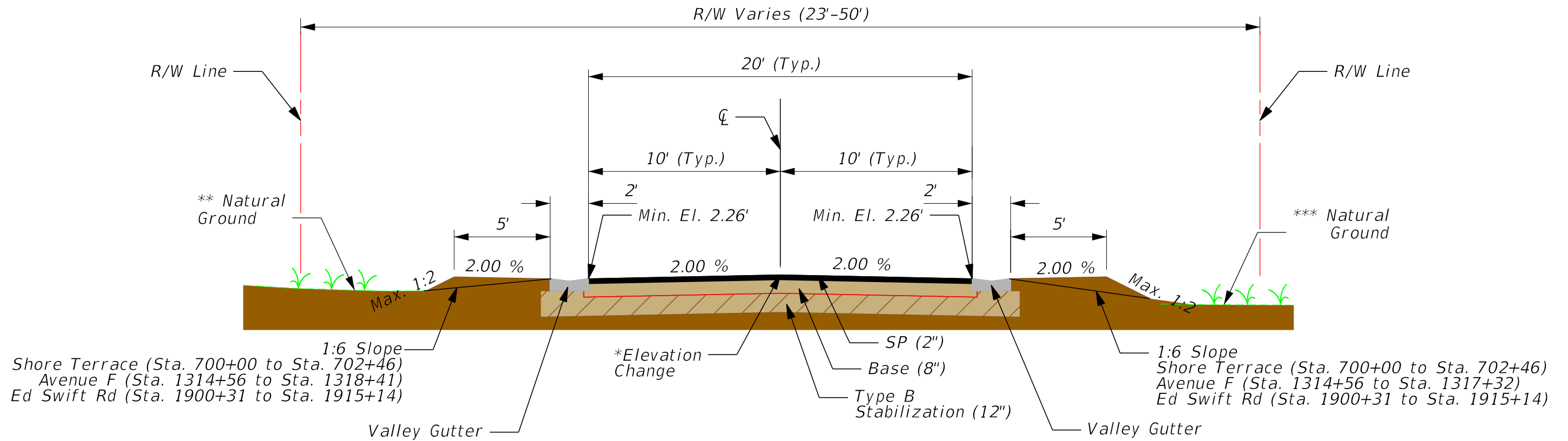
**MONROE COUNTY ROADWAY VULNERABILITY
ANALYSIS AND CAPITAL PLAN**
GULFREST PARK / GULFREST PARK NO. 2 / COPPITT EXTENSION /
COPPITT RESUBDIVISION / JOHNSONVILLE / SIMILAR SOUND SECTION A
PROJECT LAYOUT

SHEET
NO.

2

Conceptual Plans not to be used for construction.

Valley Gutter Alternative Design for NOAA Intermediate-High 2045 SLR Projections



Typical Section

Verde Dr (35' R/W)
Sta. 200+00 to Sta. 204+51
EL Monte Ln (35' R/W)
Sta. 300+00 to Sta. 305+58
Pequena Ln (35' R/W)
Sta. 400+00 to Sta. 403+85
Del Mar Blvd (35' R/W)
Sta. 500+00 to Sta. 506+84
Barcelona Dr (35' R/W)
Sta. 600+00 to Sta. 618+44
Puerta Dr (30' R/W)
Sta. 2200+00 to Sta. 2208+02

Shore Ave (50' R/W)
Sta. 800+00 to Sta. 813+93
5th St (50' R/W)
Sta. 900+00 to Sta. 905+00
Avenue G (50' R/W)
Sta. 1000+00 to Sta. 1015+31
Avenue F (50' R/W)
Sta. 1300+00 to Sta. 1314+56
Avenue E (50' R/W)
Sta. 1400+00 to Sta. 1411+47
Avenue D (50' R/W)
Sta. 1500+00 to Sta. 1511+46

Avenue C (50' R/W)
Sta. 1600+00 to Sta. 1611+46
Avenue B (50' R/W)
Sta. 1700+00 to Sta. 1711+45
1st St (50' R/W)
Sta. 1800+15 to Sta. 1816+18
Cactus Dr (50' R/W)
Sta. 2000+27 to Sta. 2013+78
Palmetto Dr (50' R/W)
Sta. 2100+29 to Sta. 2114+52

(14', 18' Pavement)
Prado Cir (30', 50' R/W)
Sta. 1100+00 to Sta. 1112+52

(18' Pavement)
Riviera Dr (30' R/W)
Sta. 100+00 to Sta. 114+06
Shore Terrace (35' R/W)
Sta. 700+00 to Sta. 702+46
Avenue F (25' R/W)
Sta. 1314+56 to Sta. 1326+03
Ed Swift Rd (23' R/W)
Sta. 1900+31 to Sta. 1915+14

(22' Pavement)
4th St (50' R/W)
Sta. 1200+25 to Sta. 1220+07

REVISIONS			
DATE	DESCRIPTION	DATE	DESCRIPTION



HDR ENGINEERING, INC.
8333 NW 53RD STREET, SUITE 302
DORAL, FL 33166-4786



**MONROE COUNTY ROADWAY VULNERABILITY
ANALYSIS AND CAPITAL PLAN**

GULFREST PARK / GULFREST PARK NO. 2 / COPPITT EXTENSION /
COPPITT RESUBDIVISION / JOHNSONVILLE / SIMILAR SOUND SECTION A
TYPICAL SECTION

SHEET NO.

3

Conceptual Plans not to be used for construction.

Valley Gutter Alternative Design for NOAA Intermediate-High 2045 SLR Projections

BIG COPPITT KEY - GULFREST PARK, GULFREST PARK NO. 2, COPPITT EXTENSION, COPPITT RESUBDIVISION, JOHNSONVILLE, SIMILAR SOUND SECTION A ELEVATIONS SUMMARY			
ROADWAY SEGMENT	ELEVATION CHANGE * (Between exist. ground and final grade)	LEFT NATURAL GROUND (FT. NAVD88) **	RIGHT NATURAL GROUND (FT. NAVD88) ***
RIVIERA DR	0' - 0.40'	1.78' - 3.33'	1.72' - 3.51'
VERDE DR	0.11' - 0.42'	1.75' - 2.63'	1.75' - 2.76'
EL MONTE LN	0' - 0.38'	1.83' - 3.04'	2.07' - 3.14'
PEQUENA LN	0' - 0.48'	1.86' - 2.80'	1.75' - 2.76'
DEL MAR BLVD	0' - 0.51'	1.82' - 2.84'	1.88' - 2.90'
PUERTA DR	0'	2.02' - 2.78'	1.66' - 2.61'
BARCELONA DR	0' - 0.01'	1.79' - 2.95'	1.45' - 3.19'
AVENUE F	0' - 0.83'	0.92' - 3.18'	1.48' - 3.65'
5TH ST	0.18' - 0.80'	1.68' - 2.72'	1.62' - 2.55'
AVENUE G	0.16' - 0.63'	1.32' - 3.21'	-0.23' - 3.36'
SHORE AVE	0'	1.64' - 3.53'	1.50' - 3.42'
SHORE TERRACE	0' - 0.83'	0.82' - 2.75'	1.41' - 2.32'
PRADO CIR	0' - 1.12'	1.00' - 2.57'	1.31' - 3.61'
4TH ST	0'	-0.24' - 3.75'	1.03' - 3.71'
AVENUE E	0' - 0.87'	1.03' - 3.98'	1.20' - 4.10'
AVENUE D	0' - 1.28'	1.93' - 3.94'	1.73' - 3.76'
AVENUE C	0' - 0.97'	1.53' - 4.08'	1.83' - 3.86'
AVENUE B	0' - 0.14'	2.13' - 4.52'	1.89' - 3.89'
1ST ST	0' - 0.86'	1.46' - 4.13'	1.53' - 4.27'
ED SWIFT RD	0' - 0.09'	2.23' - 4.62'	2.37' - 4.84'
CACTUS DR	0' - 0.12'	1.99' - 4.80'	2.18' - 4.49'
PALMETTO DR	0' - 0.38'	N/A	N/A

REVISIONS			
DATE	DESCRIPTION	DATE	DESCRIPTION

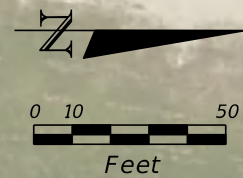
HDR
HDR ENGINEERING, INC.
8333 NW 53RD STREET, SUITE 302
DORAL, FL 33166-4786



**MONROE COUNTY ROADWAY VULNERABILITY
ANALYSIS AND CAPITAL PLAN**
*GULFREST PARK / GULFREST PARK NO. 2 / COPPITT EXTENSION /
COPPITT RESUBDIVISION / JOHNSONVILLE / SIMILAR SOUND SECTION A
TYPICAL SECTION*

SHEET
NO.
3A

Conceptual Plans not to be used for construction.



LEGEND

- STORM INLETS
- INJECTION WELLS
- STORM DRAIN
- FORCE MAIN
- PUMP STATION LOCATION
- PAVEMENT RECONSTRUCTION LIMITS
- PAVEMENT RECONSTRUCTION LIMITS WITH ROADWAY ELEVATION CHANGE
- ROADSIDE RECONSTRUCTION LIMITS

		REVISIONS	
DATE	DESCRIPTION	DATE	DESCRIPTION

HDR
 HDR ENGINEERING, INC.
 8333 NW 53RD STREET, SUITE 302
 DORAL, FL 33166-4786



**MONROE COUNTY ROADWAY VULNERABILITY
 ANALYSIS AND CAPITAL PLAN**

*GULFREST PARK / GULFREST PARK NO. 2 / COPPITT EXTENSION /
 COPPITT RESUBDIVISION / JOHNSONVILLE / SIMILAR SOUND SECTION A*

SHEET
NO.

4

Conceptual Plans not to be used for construction.



MATCH LINE STA. 106+96.10

POT STA. 114+06.45

LEGEND	
	STORM INLETS
	INJECTION WELLS
	STORM DRAIN
	FORCE MAIN
	PUMP STATION LOCATION
	PAVEMENT RECONSTRUCTION LIMITS
	PAVEMENT RECONSTRUCTION LIMITS WITH ROADWAY ELEVATION CHANGE
	ROADSIDE RECONSTRUCTION LIMITS

REVISIONS			
DATE	DESCRIPTION	DATE	DESCRIPTION

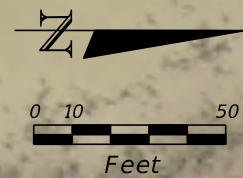
HDR
 HDR ENGINEERING, INC.
 8333 NW 53RD STREET, SUITE 302
 DORAL, FL 33166-4786



MONROE COUNTY ROADWAY VULNERABILITY ANALYSIS AND CAPITAL PLAN
 GULFREST PARK / GULFREST PARK NO. 2 / COPPITT EXTENSION / COPPITT RESUBDIVISION / JOHNSONVILLE / SIMILAR SOUND SECTION A

SHEET NO.
 5

Conceptual Plans not to be used for construction.



MATCH LINE STA. 600+73.00

MATCH LINE STA. 608+22.00



LEGEND

- STORM INLETS
- INJECTION WELLS
- STORM DRAIN
- FORCE MAIN
- PUMP STATION LOCATION
- PAVEMENT RECONSTRUCTION LIMITS
- PAVEMENT RECONSTRUCTION LIMITS WITH ROADWAY ELEVATION CHANGE
- ROADSIDE RECONSTRUCTION LIMITS

REVISIONS			
DATE	DESCRIPTION	DATE	DESCRIPTION

HDR
 HDR ENGINEERING, INC.
 8333 NW 53RD STREET, SUITE 302
 DORAL, FL 33166-4786

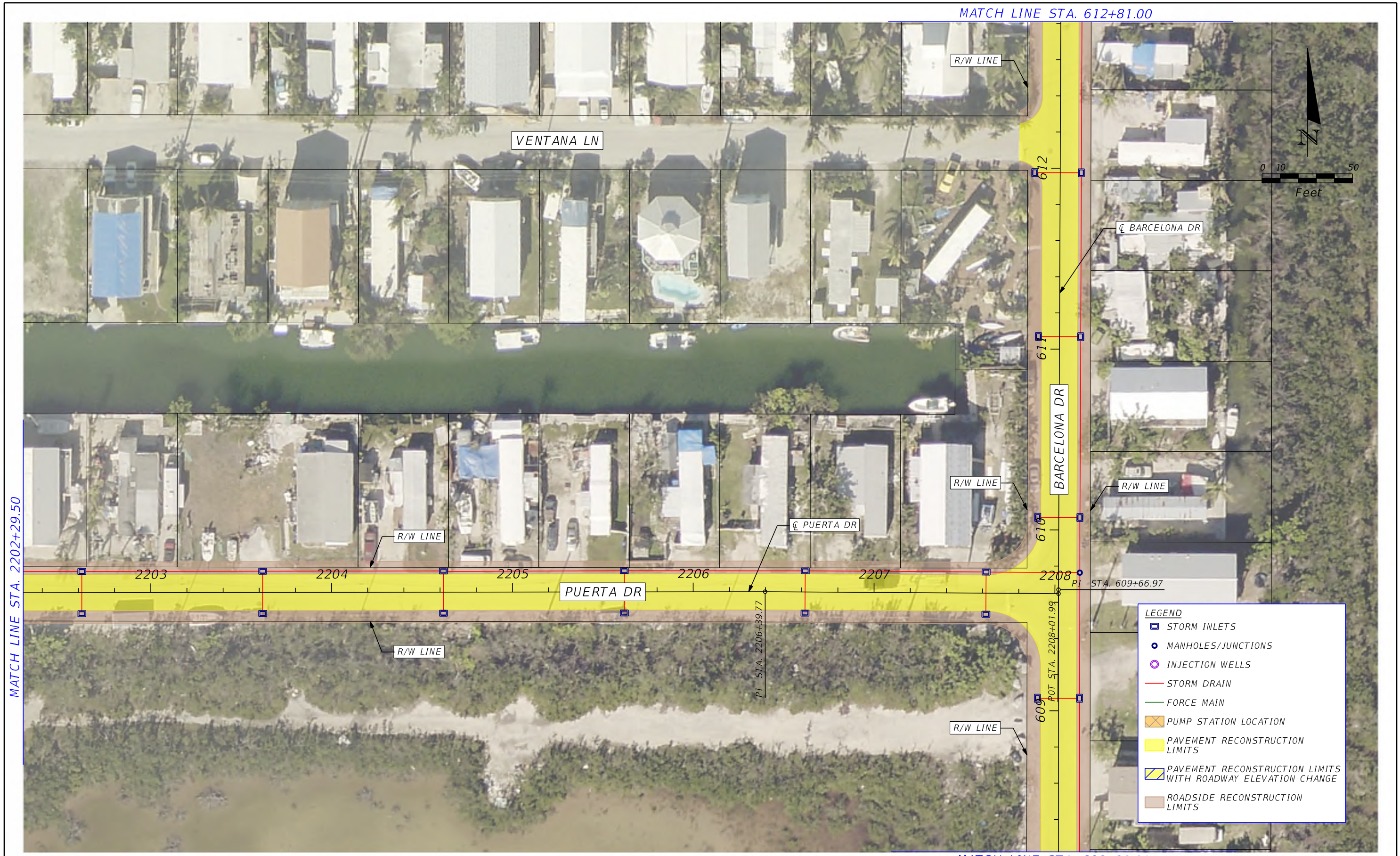


**MONROE COUNTY ROADWAY VULNERABILITY
 ANALYSIS AND CAPITAL PLAN**

*GULFREST PARK / GULFREST PARK NO. 2 / COPPITT EXTENSION /
 COPPITT RESUBDIVISION / JOHNSONVILLE / SIMILAR SOUND SECTION A*

SHEET
NO.
6

Conceptual Plans not to be used for construction.



MATCH LINE STA. 2202+29.50

MATCH LINE STA. 612+81.00

MATCH LINE STA. 608+22.00

LEGEND

- STORM INLETS
- MANHOLES/JUNCTIONS
- INJECTION WELLS
- STORM DRAIN
- FORCE MAIN
- PUMP STATION LOCATION
- PAVEMENT RECONSTRUCTION LIMITS
- PAVEMENT RECONSTRUCTION LIMITS WITH ROADWAY ELEVATION CHANGE
- ROADSIDE RECONSTRUCTION LIMITS

REVISIONS			
DATE	DESCRIPTION	DATE	DESCRIPTION

HDR
 HDR ENGINEERING, INC.
 8333 NW 53RD STREET, SUITE 302
 DORAL, FL 33166-4786



MONROE COUNTY ROADWAY VULNERABILITY ANALYSIS AND CAPITAL PLAN

GULFREST PARK / GULFREST PARK NO. 2 / COPPITT EXTENSION / COPPITT RESUBDIVISION / JOHNSONVILLE / SIMILAR SOUND SECTION A

SHEET NO.

7

Conceptual Plans not to be used for construction.

MATCH LINE STA. 200+27.38

MATCH LINE STA. 617+40.00



MATCH LINE STA. 612+81.00

REVISIONS			
DATE	DESCRIPTION	DATE	DESCRIPTION



HDR ENGINEERING, INC.
8333 NW 53RD STREET, SUITE 302
DORAL, FL 33166-4786



MONROE COUNTY ROADWAY VULNERABILITY
ANALYSIS AND CAPITAL PLAN

GULFREST PARK / GULFREST PARK NO. 2 / COPPITT EXTENSION /
COPPITT RESUBDIVISION / JOHNSONVILLE / SIMILAR SOUND SECTION A

SHEET NO.

8

Conceptual Plans not to be used for construction.



REVISIONS	
DATE	DESCRIPTION

HDR
 HDR ENGINEERING, INC.
 8333 NW 53RD STREET, SUITE 302
 DORAL, FL 33166-4786



MONROE COUNTY ROADWAY VULNERABILITY ANALYSIS AND CAPITAL PLAN

GULFREST PARK / GULFREST PARK NO. 2 / COPPITT EXTENSION / COPPITT RESUBDIVISION / JOHNSONVILLE / SIMILAR SOUND SECTION A

SHEET NO.

9

Conceptual Plans not to be used for construction.



REVISIONS	
DATE	DESCRIPTION

HDR
 HDR ENGINEERING, INC.
 8333 NW 53RD STREET, SUITE 302
 DORAL, FL 33166-4786



MONROE COUNTY ROADWAY VULNERABILITY ANALYSIS AND CAPITAL PLAN

GULFREST PARK / GULFREST PARK NO. 2 / COPPITT EXTENSION / COPPITT RESUBDIVISION / JOHNSONVILLE / SIMILAR SOUND SECTION A

SHEET NO.

10

Conceptual Plans not to be used for construction.



LEGEND

- STORM INLETS
- MANHOLES/JUNCTIONS
- INJECTION WELLS
- STORM DRAIN
- FORCE MAIN
- PUMP STATION LOCATION
- PAVEMENT RECONSTRUCTION LIMITS
- PAVEMENT RECONSTRUCTION LIMITS WITH ROADWAY ELEVATION CHANGE
- ROADSIDE RECONSTRUCTION LIMITS

REVISIONS			
DATE	DESCRIPTION	DATE	DESCRIPTION

HDR
 HDR ENGINEERING, INC.
 8333 NW 53RD STREET, SUITE 302
 DORAL, FL 33166-4786



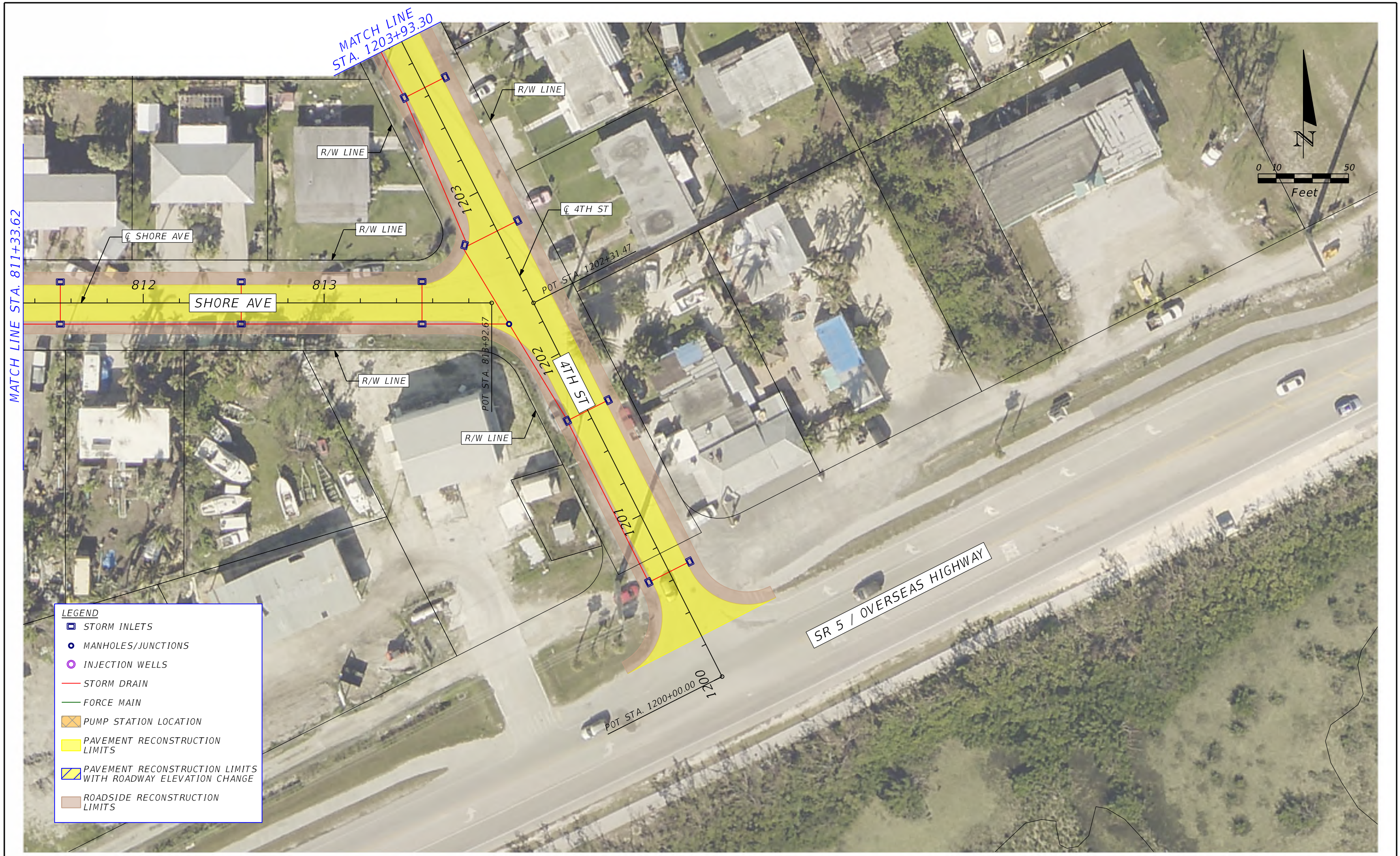
**MONROE COUNTY ROADWAY VULNERABILITY
 ANALYSIS AND CAPITAL PLAN**

*GULFREST PARK / GULFREST PARK NO. 2 / COPPITT EXTENSION /
 COPPITT RESUBDIVISION / JOHNSONVILLE / SIMILAR SOUND SECTION A*

SHEET
NO.

11

Conceptual Plans not to be used for construction.



- LEGEND**
- STORM INLETS
 - MANHOLES/JUNCTIONS
 - INJECTION WELLS
 - STORM DRAIN
 - FORCE MAIN
 - ⊠ PUMP STATION LOCATION
 - PAVEMENT RECONSTRUCTION LIMITS
 - ▨ PAVEMENT RECONSTRUCTION LIMITS WITH ROADWAY ELEVATION CHANGE
 - ROADSIDE RECONSTRUCTION LIMITS

REVISIONS	
DATE	DESCRIPTION

HDR
 HDR ENGINEERING, INC.
 8333 NW 53RD STREET, SUITE 302
 DORAL, FL 33166-4786



MONROE COUNTY ROADWAY VULNERABILITY ANALYSIS AND CAPITAL PLAN

GULFREST PARK / GULFREST PARK NO. 2 / COPPITT EXTENSION / COPPITT RESUBDIVISION / JOHNSONVILLE / SIMILAR SOUND SECTION A

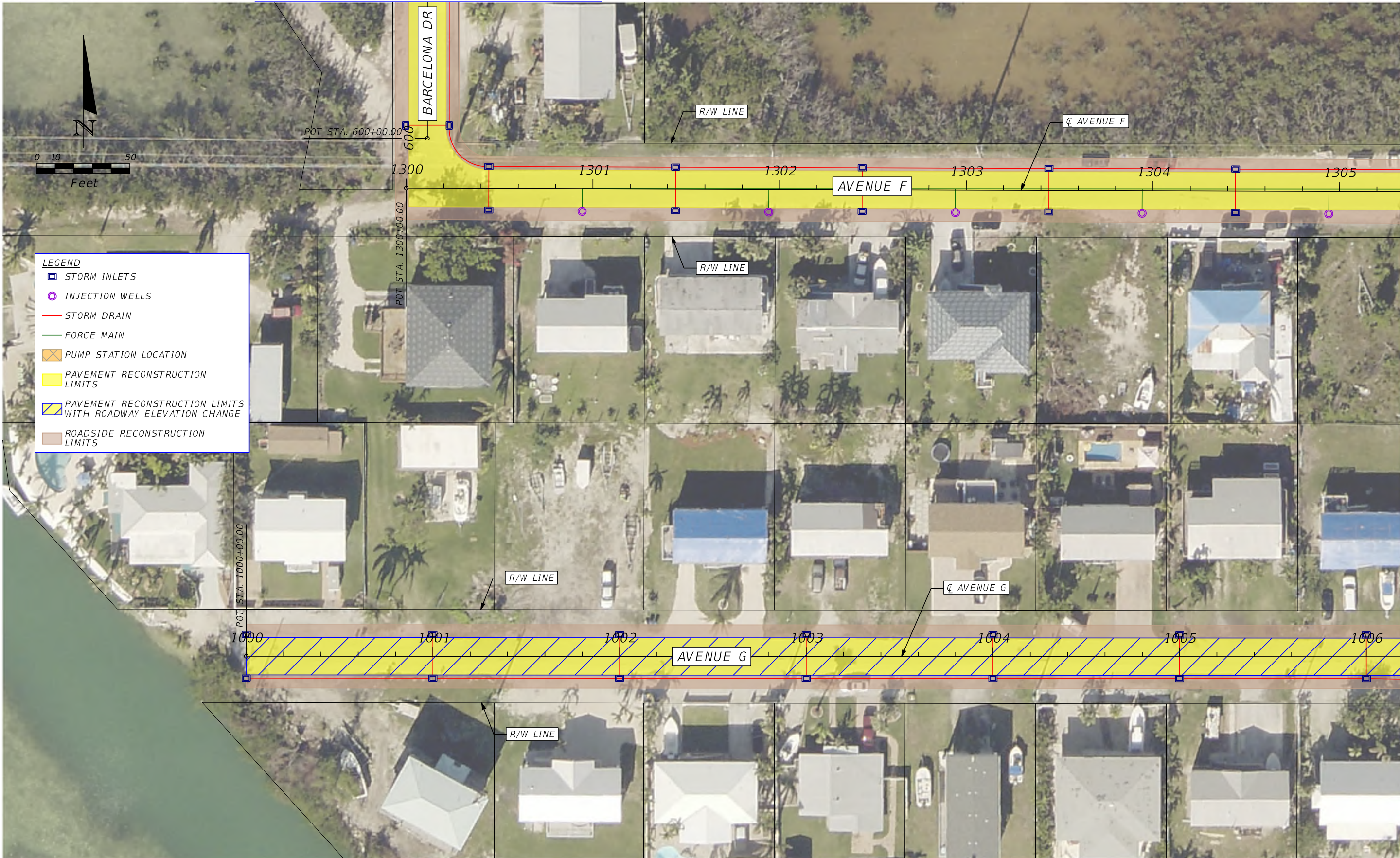
SHEET NO.
 12

Conceptual Plans not to be used for construction.

MATCH LINE STA. 600+73.00

MATCH LINE STA. 1305+32.77

MATCH LINE STA. 1006+18.50



LEGEND

- STORM INLETS
- INJECTION WELLS
- STORM DRAIN
- FORCE MAIN
- PUMP STATION LOCATION
- PAVEMENT RECONSTRUCTION LIMITS
- PAVEMENT RECONSTRUCTION LIMITS WITH ROADWAY ELEVATION CHANGE
- ROADSIDE RECONSTRUCTION LIMITS

REVISIONS			
DATE	DESCRIPTION	DATE	DESCRIPTION

HDR
 HDR ENGINEERING, INC.
 8333 NW 53RD STREET, SUITE 302
 DORAL, FL 33166-4786

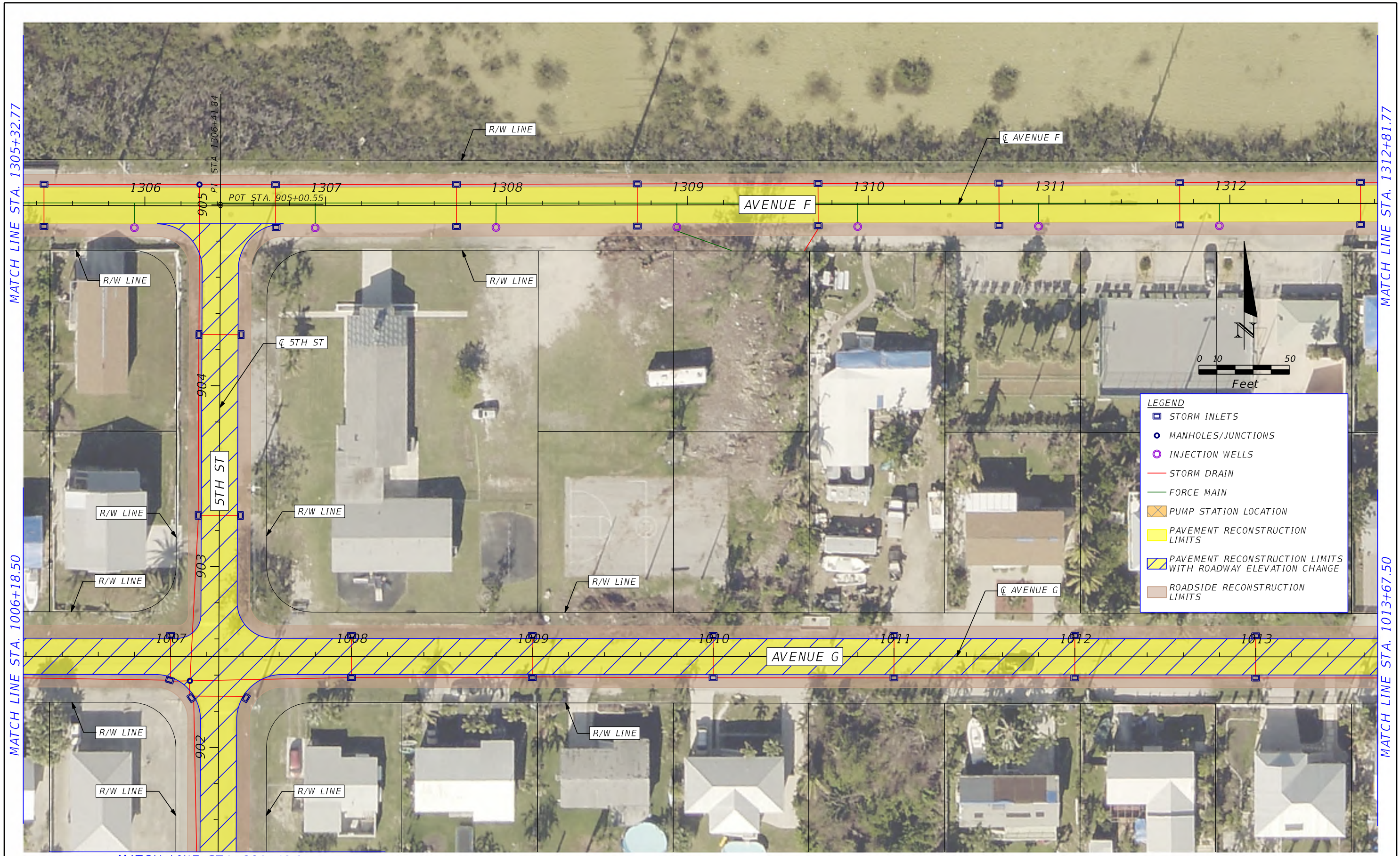


MONROE COUNTY ROADWAY VULNERABILITY ANALYSIS AND CAPITAL PLAN

GULFREST PARK / GULFREST PARK NO. 2 / COPPITT EXTENSION / COPPITT RESUBDIVISION / JOHNSONVILLE / SIMILAR SOUND SECTION A

SHEET NO.
13

Conceptual Plans not to be used for construction.



REVISIONS	
DATE	DESCRIPTION

HDR
 HDR ENGINEERING, INC.
 8333 NW 53RD STREET, SUITE 302
 DORAL, FL 33166-4786

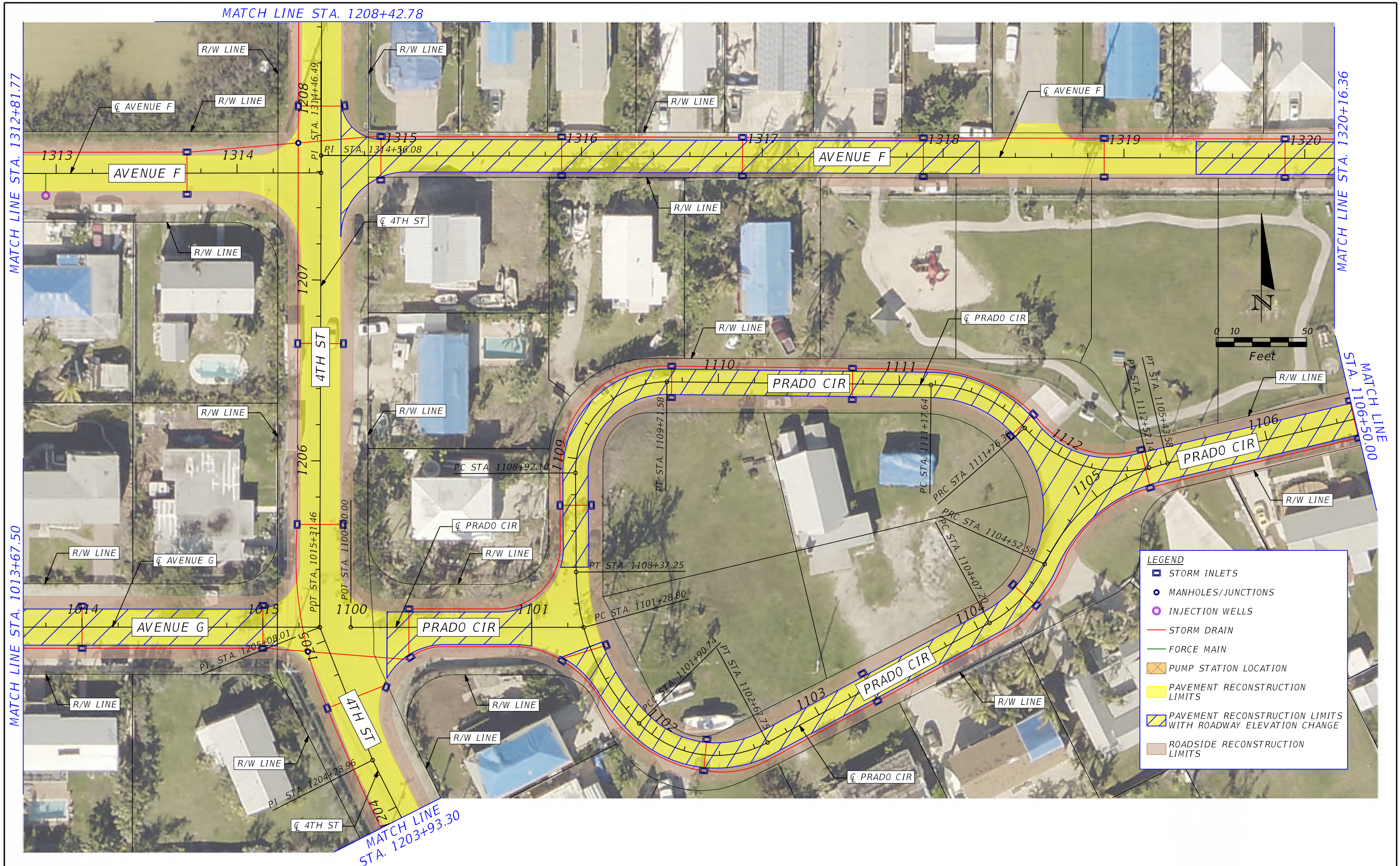


MONROE COUNTY ROADWAY VULNERABILITY ANALYSIS AND CAPITAL PLAN

GULFREST PARK / GULFREST PARK NO. 2 / COPPITT EXTENSION / COPPITT RESUBDIVISION / JOHNSONVILLE / SIMILAR SOUND SECTION A

SHEET NO.
14

Conceptual Plans not to be used for construction.



REVISIONS			
DATE	DESCRIPTION	DATE	DESCRIPTION

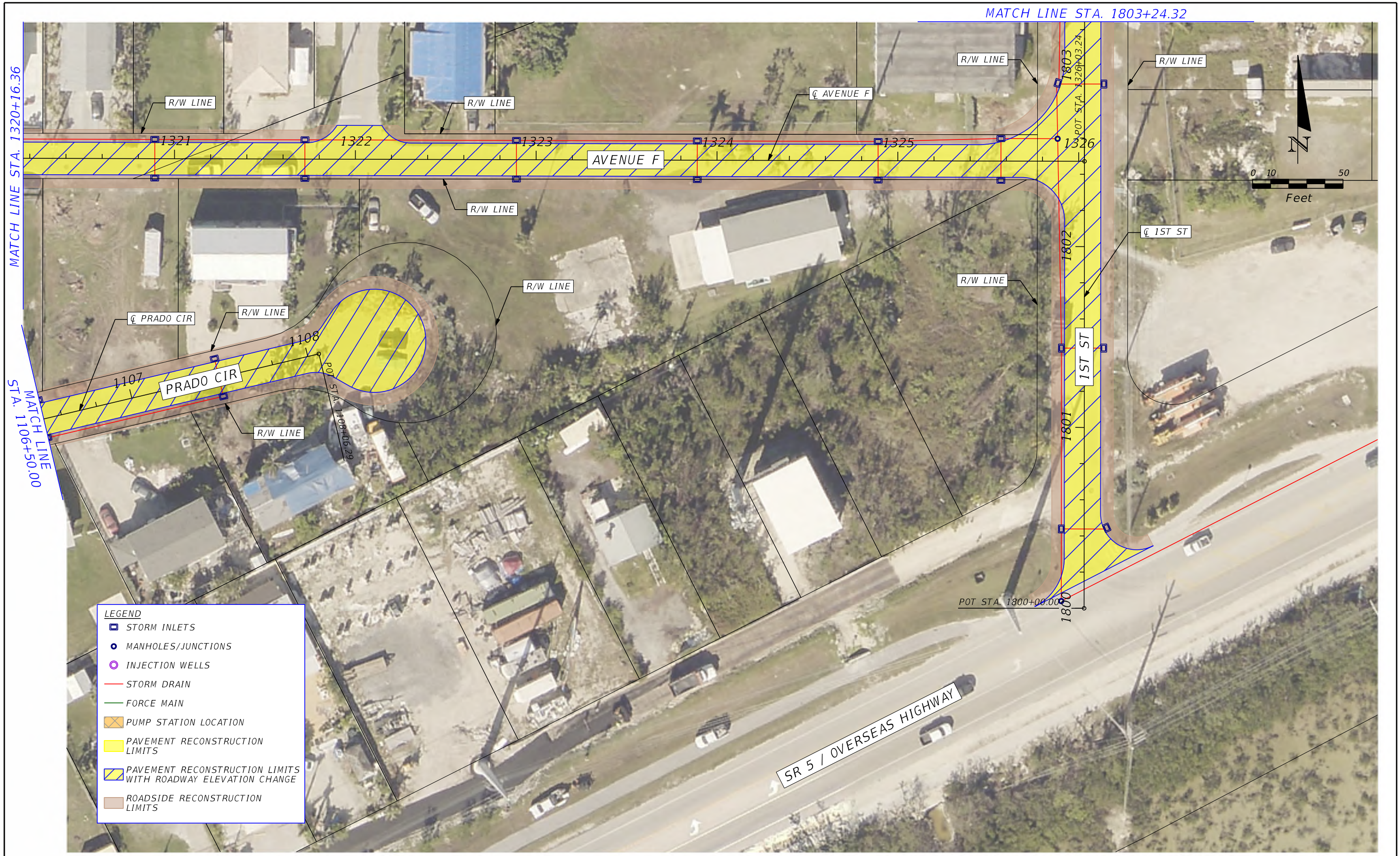
HDR
 HDR ENGINEERING, INC.
 8333 NW 53RD STREET, SUITE 302
 DORAL, FL 33166-4786



MONROE COUNTY ROADWAY VULNERABILITY ANALYSIS AND CAPITAL PLAN
 GULFREST PARK / GULFREST PARK NO. 2 / COPPITT EXTENSION / COPPITT RESUBDIVISION / JOHNSONVILLE / SIMILAR SOUND SECTION A

SHEET NO.
 15

Conceptual Plans not to be used for construction.



LEGEND

- STORM INLETS
- MANHOLES/JUNCTIONS
- INJECTION WELLS
- STORM DRAIN
- FORCE MAIN
- PUMP STATION LOCATION
- PAVEMENT RECONSTRUCTION LIMITS
- PAVEMENT RECONSTRUCTION LIMITS WITH ROADWAY ELEVATION CHANGE
- ROADSIDE RECONSTRUCTION LIMITS

REVISIONS	
DATE	DESCRIPTION

HDR
 HDR ENGINEERING, INC.
 8333 NW 53RD STREET, SUITE 302
 DORAL, FL 33166-4786



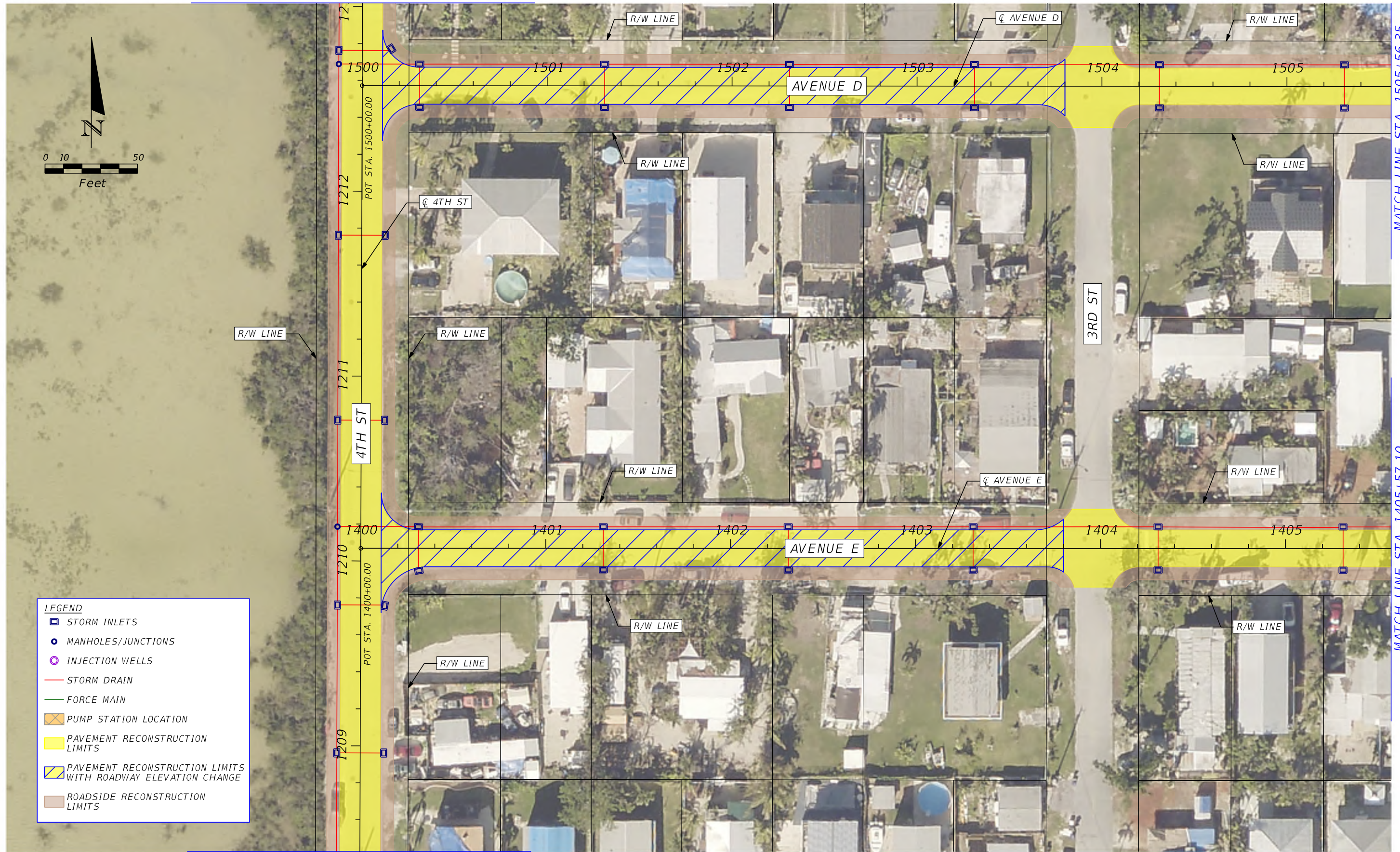
MONROE COUNTY ROADWAY VULNERABILITY ANALYSIS AND CAPITAL PLAN

GULFREST PARK / GULFREST PARK NO. 2 / COPPITT EXTENSION / COPPITT RESUBDIVISION / JOHNSONVILLE / SIMILAR SOUND SECTION A

SHEET NO.
16

Conceptual Plans not to be used for construction.

MATCH LINE STA. 1213+01.78



MATCH LINE STA. 1208+42.78

MATCH LINE STA. 1505+56.35

MATCH LINE STA. 1405+57.10

REVISIONS	
DATE	DESCRIPTION

HDR
HDR ENGINEERING, INC.
8333 NW 53RD STREET, SUITE 302
DORAL, FL 33166-4786



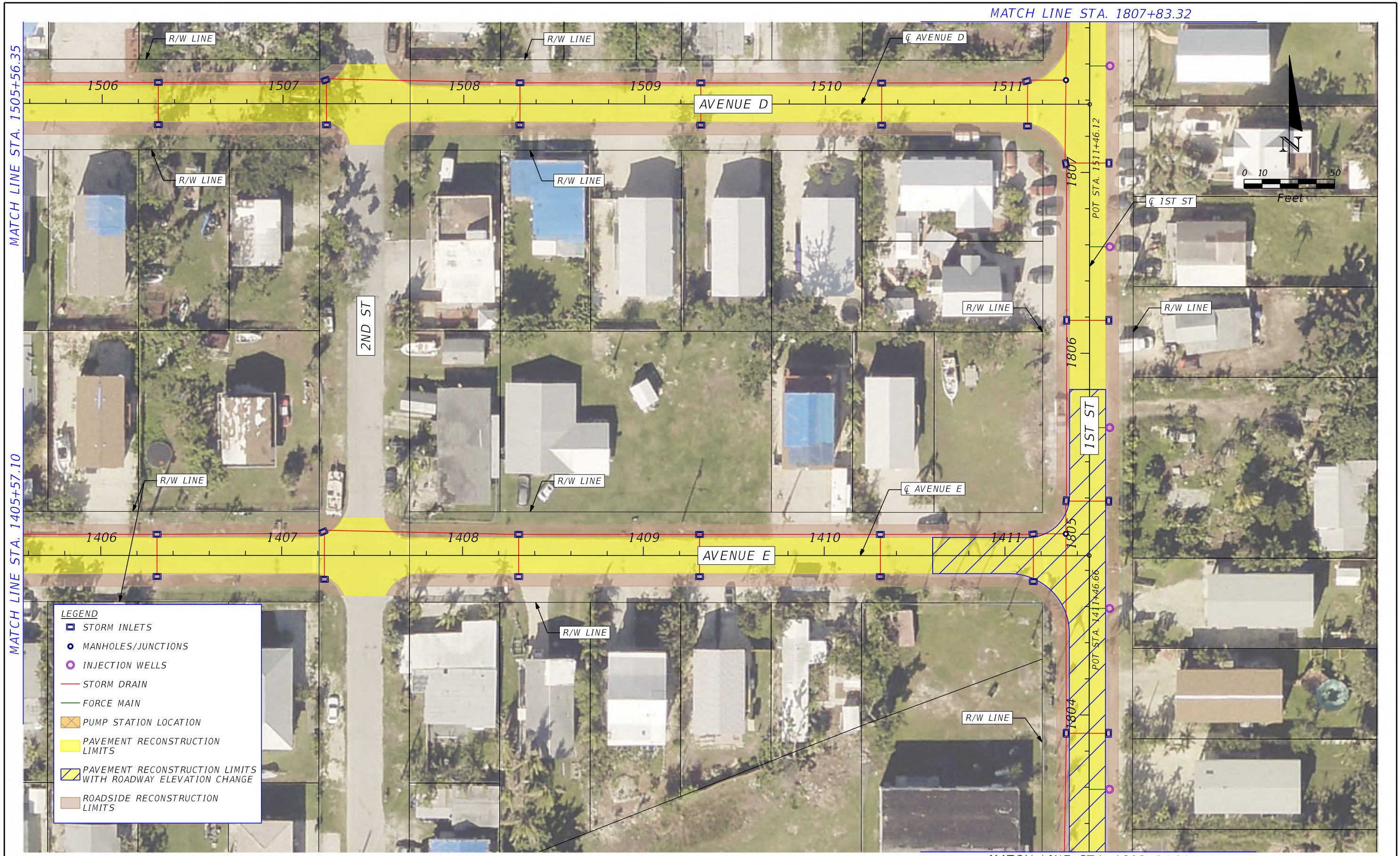
MONROE COUNTY ROADWAY VULNERABILITY ANALYSIS AND CAPITAL PLAN

GULFREST PARK / GULFREST PARK NO. 2 / COPPITT EXTENSION / COPPITT RESUBDIVISION / JOHNSONVILLE / SIMILAR SOUND SECTION A

SHEET NO.

17

Conceptual Plans not to be used for construction.

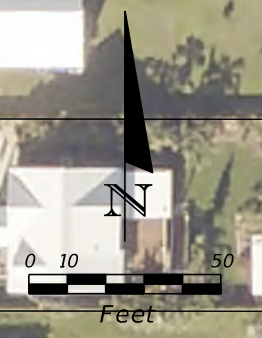


MATCH LINE STA. 1505+56.35

MATCH LINE STA. 1405+57.10

MATCH LINE STA. 1807+83.32

MATCH LINE STA. 1803+24.32



LEGEND	
	STORM INLETS
	MANHOLES/JUNCTIONS
	INJECTION WELLS
	STORM DRAIN
	FORCE MAIN
	PUMP STATION LOCATION
	PAVEMENT RECONSTRUCTION LIMITS
	PAVEMENT RECONSTRUCTION LIMITS WITH ROADWAY ELEVATION CHANGE
	ROADSIDE RECONSTRUCTION LIMITS

REVISIONS			
DATE	DESCRIPTION	DATE	DESCRIPTION

HDR
 HDR ENGINEERING, INC.
 8333 NW 53RD STREET, SUITE 302
 DORAL, FL 33166-4786

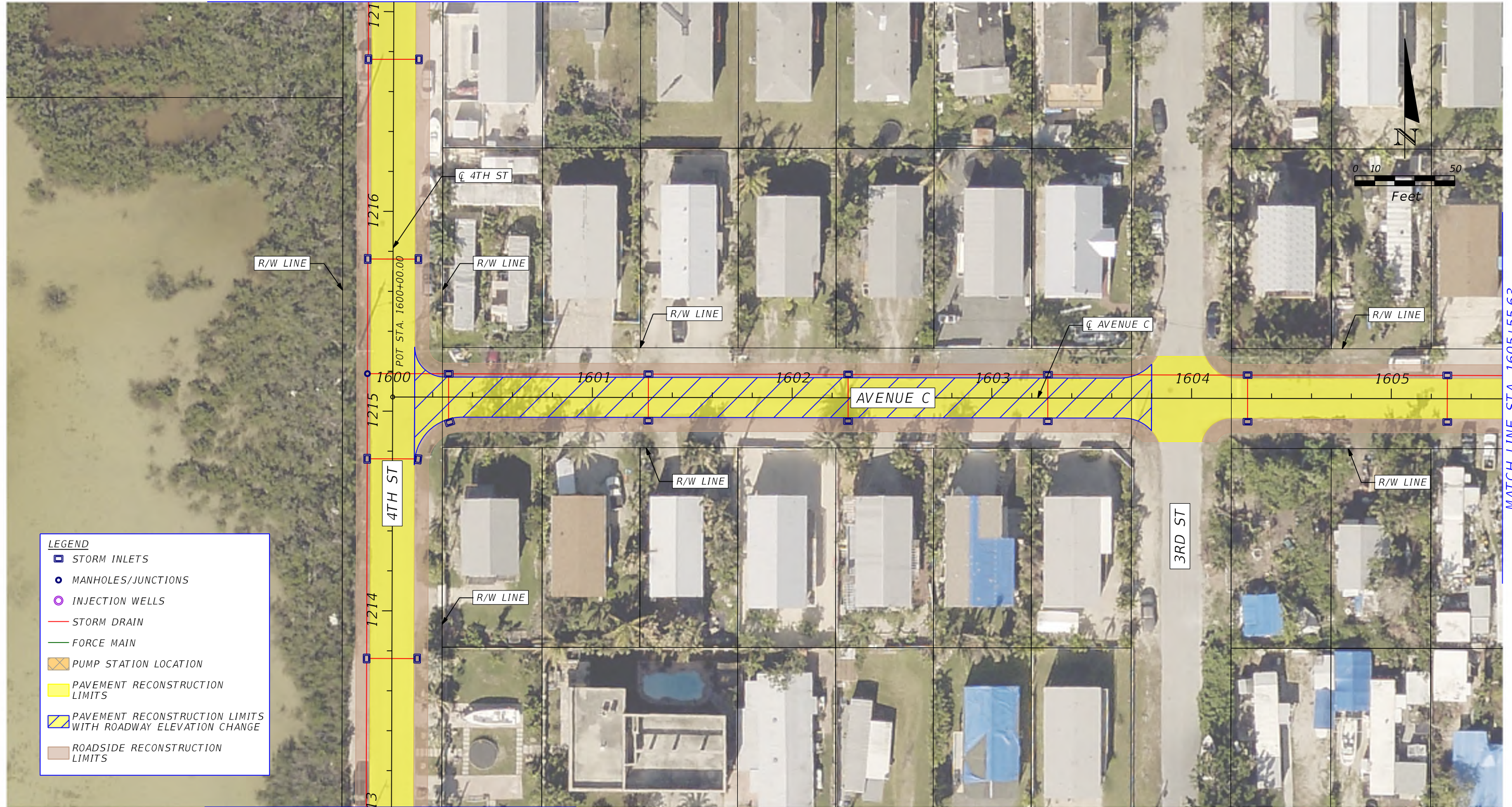


MONROE COUNTY ROADWAY VULNERABILITY ANALYSIS AND CAPITAL PLAN
 GULFREST PARK / GULFREST PARK NO. 2 / COPPITT EXTENSION / COPPITT RESUBDIVISION / JOHNSONVILLE / SIMILAR SOUND SECTION A

SHEET NO.
 18

Conceptual Plans not to be used for construction.

MATCH LINE STA. 1217+05.00



MATCH LINE STA. 1213+01.78

LEGEND

- STORM INLETS
- MANHOLES/JUNCTIONS
- INJECTION WELLS
- STORM DRAIN
- FORCE MAIN
- PUMP STATION LOCATION
- PAVEMENT RECONSTRUCTION LIMITS
- PAVEMENT RECONSTRUCTION LIMITS WITH ROADWAY ELEVATION CHANGE
- ROADSIDE RECONSTRUCTION LIMITS

REVISIONS			
DATE	DESCRIPTION	DATE	DESCRIPTION



HDR ENGINEERING, INC.
8333 NW 53RD STREET, SUITE 302
DORAL, FL 33166-4786



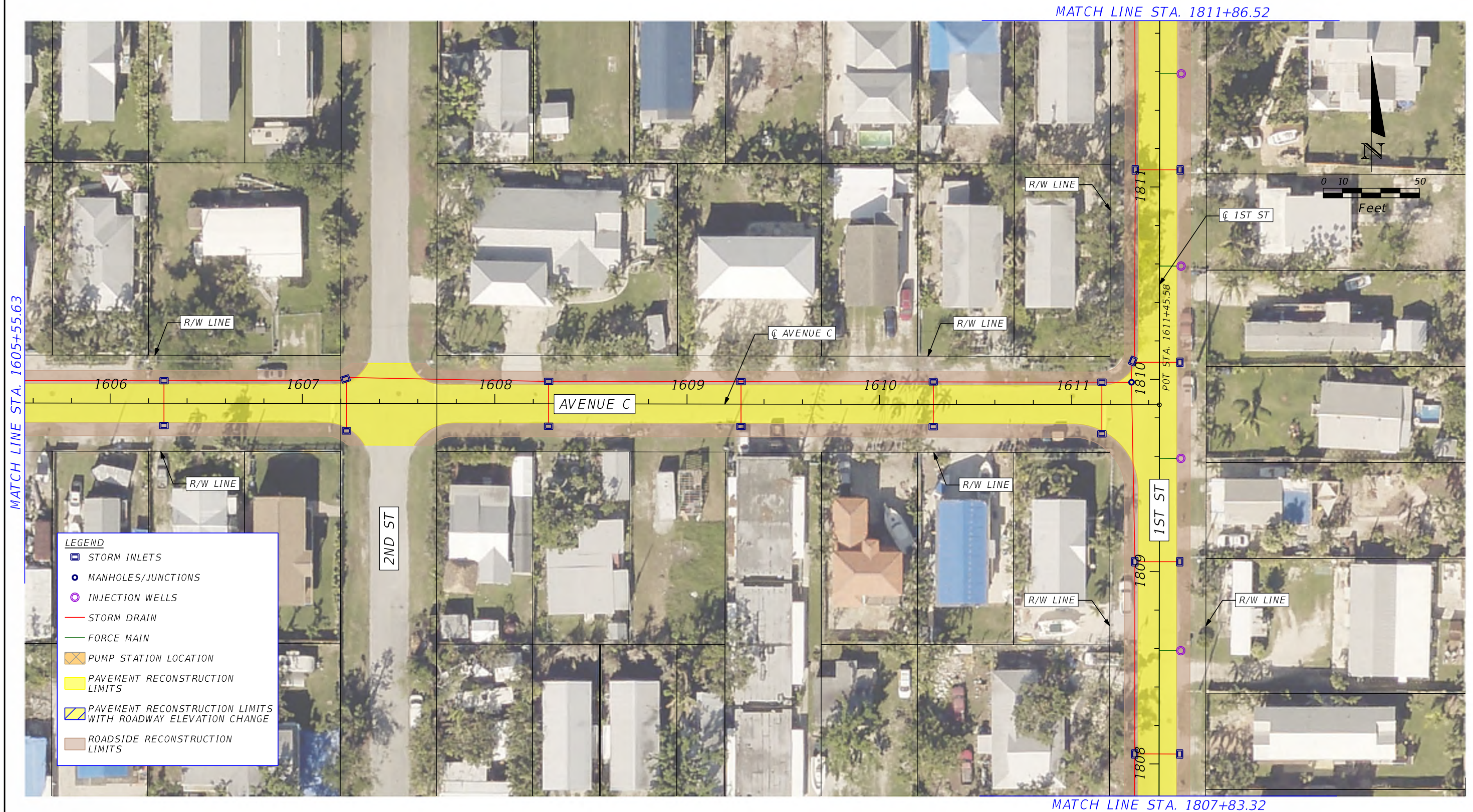
**MONROE COUNTY ROADWAY VULNERABILITY
ANALYSIS AND CAPITAL PLAN**

GULFREST PARK / GULFREST PARK NO. 2 / COPPITT EXTENSION /
COPPITT RESUBDIVISION / JOHNSONVILLE / SIMILAR SOUND SECTION A

SHEET NO.

19

Conceptual Plans not to be used for construction.



REVISIONS			
DATE	DESCRIPTION	DATE	DESCRIPTION

HDR
 HDR ENGINEERING, INC.
 8333 NW 53RD STREET, SUITE 302
 DORAL, FL 33166-4786



MONROE COUNTY ROADWAY VULNERABILITY ANALYSIS AND CAPITAL PLAN
 GULFREST PARK / GULFREST PARK NO. 2 / COPPITT EXTENSION / COPPITT RESUBDIVISION / JOHNSONVILLE / SIMILAR SOUND SECTION A

SHEET NO.
 20

Conceptual Plans not to be used for construction.



LEGEND

- STORM INLETS
- MANHOLES/JUNCTIONS
- INJECTION WELLS
- STORM DRAIN
- FORCE MAIN
- PUMP STATION LOCATION
- PAVEMENT RECONSTRUCTION LIMITS
- PAVEMENT RECONSTRUCTION LIMITS WITH ROADWAY ELEVATION CHANGE
- ROADSIDE RECONSTRUCTION LIMITS

MATCH LINE STA. 1217+05.00

MATCH LINE STA. 1705+54.90

REVISIONS	
DATE	DESCRIPTION

HDR
 HDR ENGINEERING, INC.
 8333 NW 53RD STREET, SUITE 302
 DORAL, FL 33166-4786



MONROE COUNTY ROADWAY VULNERABILITY ANALYSIS AND CAPITAL PLAN

GULFREST PARK / GULFREST PARK NO. 2 / COPPITT EXTENSION / COPPITT RESUBDIVISION / JOHNSONVILLE / SIMILAR SOUND SECTION A

SHEET NO.

21

Conceptual Plans not to be used for construction.



REVISIONS			
DATE	DESCRIPTION	DATE	DESCRIPTION

HDR
 HDR ENGINEERING, INC.
 8333 NW 53RD STREET, SUITE 302
 DORAL, FL 33166-4786



MONROE COUNTY ROADWAY VULNERABILITY ANALYSIS AND CAPITAL PLAN

GULFREST PARK / GULFREST PARK NO. 2 / COPPITT EXTENSION / COPPITT RESUBDIVISION / JOHNSONVILLE / SIMILAR SOUND SECTION A

SHEET NO.
22

Conceptual Plans not to be used for construction.



LEGEND

- STORM INLETS
- MANHOLES/JUNCTIONS
- INJECTION WELLS
- STORM DRAIN
- FORCE MAIN
- PUMP STATION LOCATION
- PAVEMENT RECONSTRUCTION LIMITS
- PAVEMENT RECONSTRUCTION LIMITS WITH ROADWAY ELEVATION CHANGE
- ROADSIDE RECONSTRUCTION LIMITS

REVISIONS			
DATE	DESCRIPTION	DATE	DESCRIPTION

HDR
 HDR ENGINEERING, INC.
 8333 NW 53RD STREET, SUITE 302
 DORAL, FL 33166-4786



**MONROE COUNTY ROADWAY VULNERABILITY
 ANALYSIS AND CAPITAL PLAN**

*GULFREST PARK / GULFREST PARK NO. 2 / COPPITT EXTENSION /
 COPPITT RESUBDIVISION / JOHNSONVILLE / SIMILAR SOUND SECTION A*

SHEET
NO.

23

Conceptual Plans not to be used for construction.



LEGEND

- STORM INLETS
- INJECTION WELLS
- STORM DRAIN
- FORCE MAIN
- PUMP STATION LOCATION
- PAVEMENT RECONSTRUCTION LIMITS
- PAVEMENT RECONSTRUCTION LIMITS WITH ROADWAY ELEVATION CHANGE
- ROADSIDE RECONSTRUCTION LIMITS

REVISIONS			
DATE	DESCRIPTION	DATE	DESCRIPTION

HDR
 HDR ENGINEERING, INC.
 8333 NW 53RD STREET, SUITE 302
 DORAL, FL 33166-4786



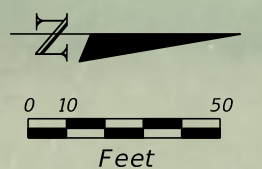
**MONROE COUNTY ROADWAY VULNERABILITY
 ANALYSIS AND CAPITAL PLAN**

*GULFREST PARK / GULFREST PARK NO. 2 / COPPITT EXTENSION /
 COPPITT RESUBDIVISION / JOHNSONVILLE / SIMILAR SOUND SECTION A*

SHEET
NO.

24

Conceptual Plans not to be used for construction.



REVISIONS			
DATE	DESCRIPTION	DATE	DESCRIPTION

HDR
 HDR ENGINEERING, INC.
 8333 NW 53RD STREET, SUITE 302
 DORAL, FL 33166-4786



MONROE COUNTY ROADWAY VULNERABILITY ANALYSIS AND CAPITAL PLAN
 GULFREST PARK / GULFREST PARK NO. 2 / COPPITT EXTENSION / COPPITT RESUBDIVISION / JOHNSONVILLE / SIMILAR SOUND SECTION A

SHEET NO.
 25

Conceptual Plans not to be used for construction.



MATCH LINE STA. 2107+25.80

LEGEND

- STORM INLETS
- MANHOLES/JUNCTIONS
- INJECTION WELLS
- STORM DRAIN
- FORCE MAIN
- PUMP STATION LOCATION
- PAVEMENT RECONSTRUCTION LIMITS
- PAVEMENT RECONSTRUCTION LIMITS WITH ROADWAY ELEVATION CHANGE
- ROADSIDE RECONSTRUCTION LIMITS

REVISIONS			
DATE	DESCRIPTION	DATE	DESCRIPTION

HDR
 HDR ENGINEERING, INC.
 8333 NW 53RD STREET, SUITE 302
 DORAL, FL 33166-4786



**MONROE COUNTY ROADWAY VULNERABILITY
 ANALYSIS AND CAPITAL PLAN**

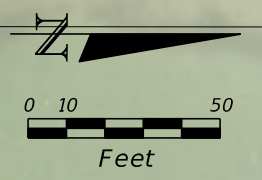
*GULFREST PARK / GULFREST PARK NO. 2 / COPPITT EXTENSION /
 COPPITT RESUBDIVISION / JOHNSONVILLE / SIMILAR SOUND SECTION A*

SHEET
NO.

26

Conceptual Plans not to be used for construction.

MATCH LINE STA. 2107+25.80



LEGEND	
	STORM INLETS
	INJECTION WELLS
	STORM DRAIN
	FORCE MAIN
	PUMP STATION LOCATION
	PAVEMENT RECONSTRUCTION LIMITS
	PAVEMENT RECONSTRUCTION LIMITS WITH ROADWAY ELEVATION CHANGE
	ROADSIDE RECONSTRUCTION LIMITS

REVISIONS			
DATE	DESCRIPTION	DATE	DESCRIPTION

HDR
 HDR ENGINEERING, INC.
 8333 NW 53RD STREET, SUITE 302
 DORAL, FL 33166-4786



MONROE COUNTY ROADWAY VULNERABILITY ANALYSIS AND CAPITAL PLAN
 GULFREST PARK / GULFREST PARK NO. 2 / COPPITT EXTENSION / COPPITT RESUBDIVISION / JOHNSONVILLE / SIMILAR SOUND SECTION A

SHEET NO.
 27

Conceptual Plans not to be used for construction.