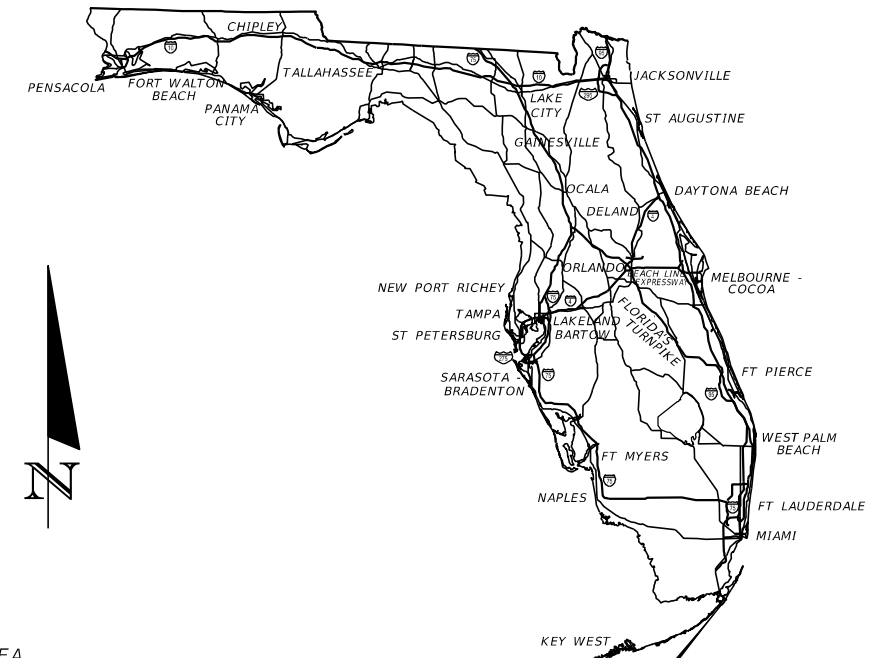


# CONTRACT PLANS

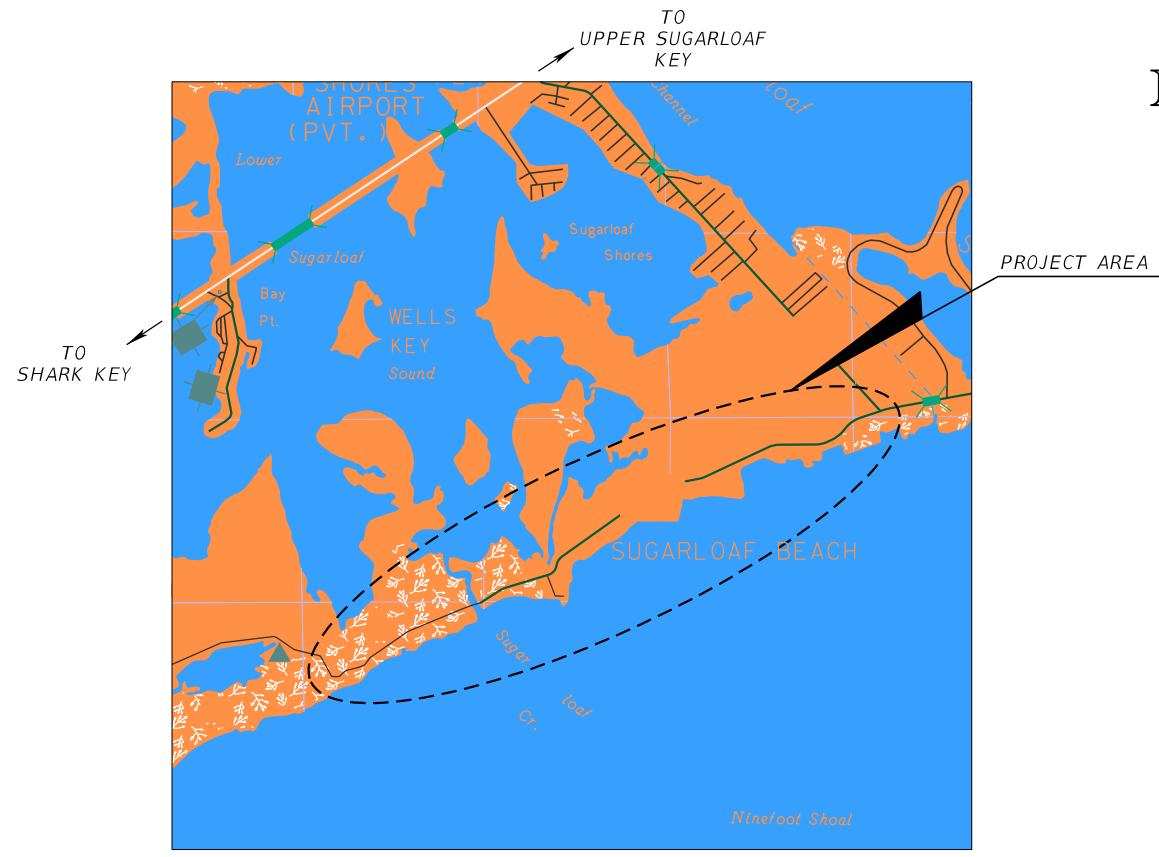
## MONROE COUNTY ROADWAY VULNERABILITY ANALYSIS AND CAPITAL PLAN

### INDEX OF ROADWAY PLANS

SHEET NO.	SHEET DESCRIPTION
1	KEY SHEET
2	PROJECT LOCATION
3	TYPICAL SECTION



LOCATION OF PROJECT



**Disclaimer:**  
 These are conceptual roadway plans developed under the Monroe County Roadway Vulnerability Analysis project for planning purposes. The analysis considered the NOAA 2017 (Intermediate-High) Sea Level Rise and King Tide Projections for a target year of 2045. A pump station parcel will be required and identified in the design phase. The recommended roadway elevation projects depicted and perceived drainage structure locations and layout shown are subject to change throughout the execution of the engineering design phase. These conceptual roadway plans cannot be relied upon for any other purpose by any third party.

PLANS PREPARED BY:  
 HDR ENGINEERING, INC.  
 8333 NW 53RD STREET, SUITE 302  
 DORAL, FL 33166

NOTE: THE SCALE OF THESE PLANS MAY HAVE CHANGED DUE TO REPRODUCTION.

PRELIMINARY PLANS  
 FOR REFERENCE PURPOSES ONLY  
 MARCH 2022

**Conceptual Plans not to be used for construction.**



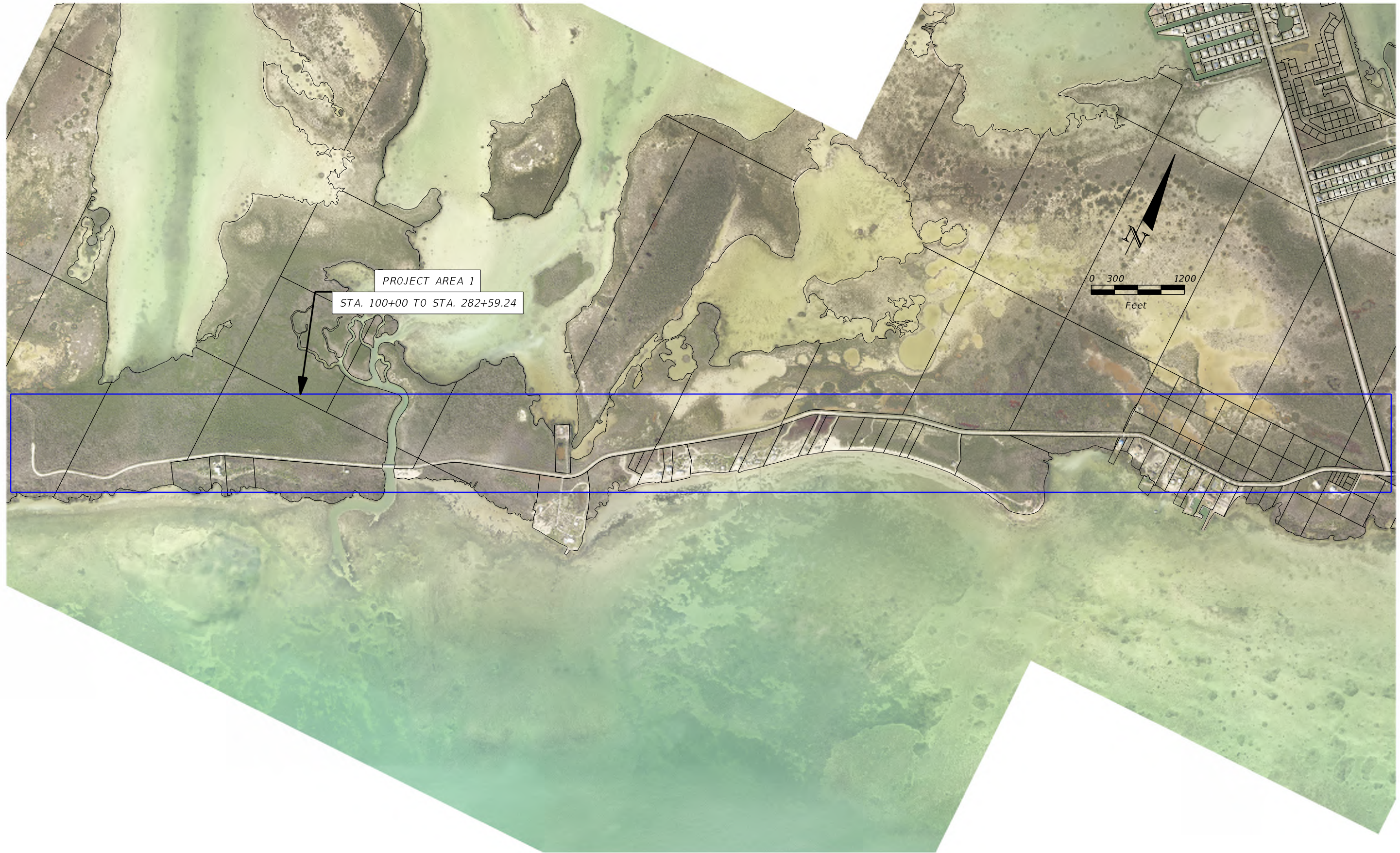
PROJECT LENGTH IS BASED ON Q OF CONSTRUCTION

LENGTH OF PROJECT		
	LINEAR FEET	MILES
ROADWAY	17,997	3.409
BRIDGES	--	--
NET LENGTH OF PROJECT	17,997	3.409
EXCEPTIONS	--	--
GROSS LENGTH OF PROJECT	17,997	3.409

ROADWAY PLANS  
 ENGINEER OF RECORD:

P.E. NO:

PROJECT AREA #82  
 LOWER SUGARLOAF KEY  
 SUBDIVISIONS:  
 SR 939A



REVISIONS	
DATE	DESCRIPTION

**HDR**  
 HDR ENGINEERING, INC.  
 8333 NW 53RD STREET, SUITE 302  
 DORAL, FL 33166-4786

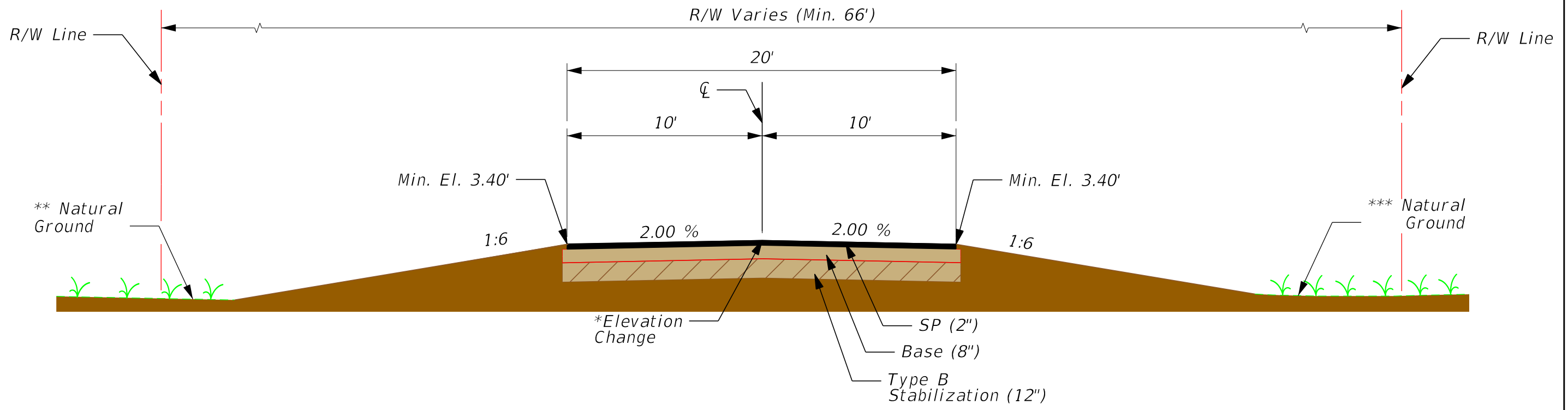


*MONROE COUNTY ROADWAY VULNERABILITY  
 ANALYSIS AND CAPITAL PLAN  
 LOWER SUGARLOAF KEY - SR 939A  
 PROJECT LAYOUT*

SHEET NO.  
 2

**Conceptual Plans not to be used for construction.**

# Reconstruction Alternative Design for NOAA Intermediate-High 2045 SLR Projections



**Typical Section**  
  
**SR 939A**  
 Sta. 100+00 to Sta. 148+58  
 Sta. 151+20 to Sta. 282+59

LOWER SUGARLOAF KEY - SR 939A ELEVATIONS SUMMARY			
ROADWAY SEGMENT	ELEVATION CHANGE * (Between exist. ground and final grade)	LEFT NATURAL GROUND (FT. NAVD88) **	RIGHT NATURAL GROUND (FT. NAVD88) ***
SR 939A	0.00' - 2.16'	-2.74' - 3.83'	-1.82' - 5.90'

REVISIONS			
DATE	DESCRIPTION	DATE	DESCRIPTION

HDR

HDR ENGINEERING, INC.  
8333 NW 53RD STREET, SUITE 302  
DORAL, FL 33166-4786



**MONROE COUNTY ROADWAY VULNERABILITY  
ANALYSIS AND CAPITAL PLAN**  
  
 LOWER SUGARLOAF KEY - SR 939A  
 TYPICAL SECTION

SHEET  
NO.  
  
3

Conceptual Plans not to be used for construction.